



ascolite[®]
A Better Solution

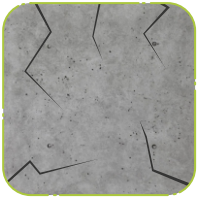
**STRUCTURAL REPAIRS
SEALANTS & GROUTS**

Experience the ascolite advantage...

The Ascolite advantage is product offerings that are backed by expertise. The insights provided by us combine with cutting-edge service standards, resulting in pampered & content clients.

As Ascolite, we swear by the mantra "Growing Relationships" & have proven dependability in all product offerings.

SPEED & CONSISTENCY GUARANTEED



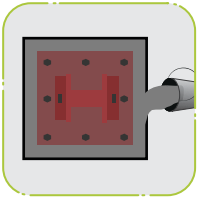
Crack Repairs

Solutions for all types of cracks ranging from 1 mm-10 mm for various types, including structural cracks & masonry cracks.



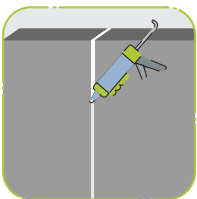
Bonding Agents

Multiple solutions for bonding old to new concrete, steel to concrete, masonry to concrete & renders to concrete.



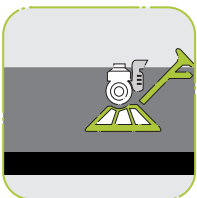
Non-Shrink Grouts

Shrinkage crack free dynamic grouting solutions with cement based & synthetic resin based formulations upto 100 N/mm² compressive strength.



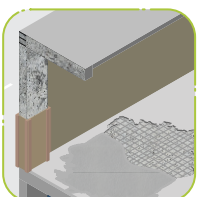
Sealants

Flexible caulking & sealing solutions for various joints like expansion joints, bigger cracks & other structural gaps.



Floor Hardener

Dry Shake topping compound for preparing high abrasion resistant floors, metallic & non-metallic, available in various colours.



Structure Repairs

Cementitious & resin based high strength mortars & concrete pre-mixes for all types of structural repairs.

Content

About Us

- Group Introduction 02
 - Company Introduction 03
-

Bonding Agents

- Ascobond 450 04
 - Ascobond EP 05
-

Structural Repairs

- Ascoprime Rustcon 06
 - Ascoprime Zincguard 07
 - Ascoplug 08
 - Ascofill ES 09
 - Ascopoxy Putty 10
 - Injection PU 11
 - Ascopoxy Putty 12
 - Ascorepair CRM 13
 - Ascorepair RTM 14
 - Ascorepair ERM 15
 - Ascorepair Rapid 16
 - Ascocrete MC (20, 40, 60) 17
-

Non-Shrink Grouts

- Ascogrout (40, 50) 18
 - Ascogrout (65, 80) 19
 - Ascogrout GG (20, 50, 65) 20
 - Ascogrout EP - LV 21
 - Ascogrout EP 100 22
-

Floor Hardeners

- Ascotop FH 111 23
 - Ascotop FH 333 24
 - Ascocrete overlay 25
-

Sealants

- Ascoprime PS 26
- Ascoseal PS 27
- Ascoseal PU 28

OUR GROUP



Ascon Group of Developers

Headquartered in Surat (Gujarat) the group has over 4 decades of experience and is a diversified business group, comprising of construction, manufacturing, processing and trading.



Ascolite:

Since 2012.
Manufacturing & supplying of building materials.



Ascon Realty:

Since 1995.
Developing premium high rise towers in the city of Surat, under the brand 'SURYA'.



Geetatex:

Since 1980.
Trading of sarees & dress materials to textile processing & embroidery.

ABOUT ASCOLITE

Ascolite®

A Better Solution

Aswani Industries Private Limited

Ascolite is marketed by Aswani Industries Pvt. Ltd. (formerly known as Aswani Construction Pvt. Ltd.) The introduction of Ascolite was a new direction by the group to vertically growing to building materials from construction.

The first step taken to promote Ascolite was by establishing the largest state-of-the-art Fly Ash Blocks (Aerated Autoclave) manufacturing facility at Surat (Gujarat) & today Ascolite has over 100 products in Walling, Tile-fixing, Waterproofing & Construction Chemicals.

PRODUCT RANGE

Walling Solutions



Screeds, Tiles/Stone Adhesives & Grouts



Construction Chemicals



Waterproofing Systems



Structural Repairs, Sealants & Grouts



Protective Coatings



ASCOLITE ADVANTAGE

Production Capacity

State of the art production facilities for :

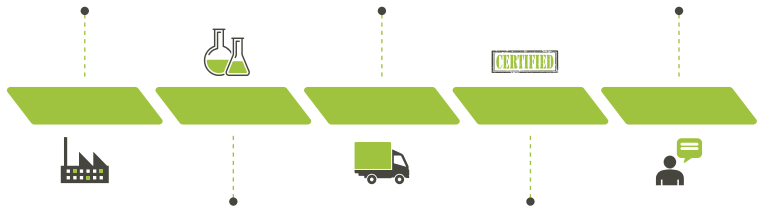
- ◆ Fly Ash Blocks (Aerated Autoclaved)
- ◆ Dry-Mix Products
- ◆ Construction Chemicals

Own Fleet of Vehicles

Commendable fleet strength of our own, which empowers us to deliver material on time.

Technical Assistance

The aim of educating industry people on finer aspects of new age construction materials & its application.



State of the art R&D Lab

Industry edge-cutting, well equipped R&D centre in Surat (Gujarat).

Quality Certified Products

We take a holistic approach to quality & consistency, which is key to the company's entire philosophy.

CORE IDEOLOGY



Core Purpose

To encourage & ensure a paradigm shift in delivering trendsetting experiences.



Mission Statement

To deliver contemporary construction solutions backed by expertise, based on novel market needs.



Core Values

- ◆ Quest to learn
- ◆ Integrity
- ◆ Energetic
- ◆ Eye for detail
- ◆ Making a difference

CUSTOMERS

Over 500 satisfied customers which include :



Architects & Engineers



Developers



Contractors



Channel Partners



Retailers



Residential



Commercial



Institutions



Industries



Repairs

ASCOBOND 450

SBR Latex based Multipurpose Bonding Agent & Waterproofing cum Repair Additive

- ◆ **ASCOBOND 450** is a styrene-butadiene rubber latex-based material, designed to improve waterproofing, bonding, physical properties & integrity of cementitious mortars, screeds & concretes.
- ◆ **ASCOBOND 450** also acts as a bonding agent/sealer to concrete, plaster or other porous substrates & is also suitable for tropical & hot climates.

RECOMMENDED APPLICATIONS

- ◆ **Bonding Slurry** : Old to new concrete, plaster & gypsum etc.
- ◆ **Structural Repairs** : Reconstruction work, concrete repairs, re-plaster, masonry, parking, bridge deck etc.
- ◆ **Anti-corrosion** : Protection of reinforcements in concrete repairs
- ◆ Others such as waterproofing & as a tile fixing mortar's additive

KEY FEATURES & BENEFITS



Highly versatile



Enhances the flexural & tensile strength of the mortar



Waterproof cementitious systems



Reduces shrinkage cracking



Improves durability of mortar

TECHNICAL SPECIFICATIONS¹

(ISO 527, ASTM C 882, BS 6319, Part 7 -1985, ASTM C 348, ASTM C 881)

Appearance	: Milky White, Modified Viscous Liquid
Specific Gravity	: 1.01 ± 0.02 Kg/ℓ
Solid Content	: ≥ 44%
pH	: 7.5 - 9
Shear Bond Strength	: Concrete Failure
Open Time	: 5 - 10 Minutes
Tensile Adhesion with Concrete	: ≥ 1.5 N/mm ² , Concrete Failure
Pull Out Bond Strength on Concrete	: ≥ 4.5 N/mm ² @ 28 Days
Mortar Compressive Strength	: ≥ 40 N/mm ² @ 28 Days
Mortar Tensile Strength	: ≥ 5 N/mm ² @ 28 Days
Mortar Flexural Strength	: ≥ 10 N/mm ² @ 28 Days
Mixing Ratio	Bond Coat - OPC : Ascobond 450 : Water (1 : 1 : 1). Repair Mortar - OPC : Sand : Ascobond 450 : Water (5 : 12.5 : 1 : 1).

COVERAGE

- ◆ A mix of cement : water : Ascobond 450 (1 : 1 : 1) - will give 50 - 70 ft² / ℓ / coat
- ◆ Subject to mix for other applications.

SHELF LIFE

12 months from the date of manufacturing.

¹The values obtained are from laboratory testing conditions at 27 ± 2°C. On site tests may show slight variation due to site conditions and/or methods of testing/application. Follow company TDS to obtain best results.



Packaging : Available in
1, 5, 20, 50, 100 & 200 ℓ

ASCOBOND EP

Specially Formulated 2-Part High Strength Epoxy Bonding Agent

- ◆ **ASCOBOND EP** is a high-strength, solvent-free epoxy bonding agent specially formulated to be used for bonding new concrete to old concrete or mixing with dry sand to make a repair mortar.
- ◆ With 100 % solids, it is a modified epoxy resin adhesive.

RECOMMENDED APPLICATIONS

- ◆ Bonding materials such as concrete, masonry, stone, wood, metal, etc.
- ◆ Bonding plastic concrete to existing concrete or steel
- ◆ Binder for epoxy repair mortar to patch or overlay horizontal surfaces
- ◆ Gravity feed of cracks in horizontal concrete & wood surfaces
- ◆ Anchoring dowel bars, tie bars, bolts etc. in horizontal surfaces

KEY FEATURES & BENEFITS



Ultimate bond strength



Exhibits high mechanical strength



Bonds a wide variety of materials



High durability



Can be applied on damp surfaces

TECHNICAL SPECIFICATIONS¹ (ASTM C 579, IS 9162, ASTM C 882, ASTM C 882, ASTM C 881)

Form	: Smooth Paste Epoxy Resin : Hardener (1 : 1)
Colour	: White
Specific Gravity	: 1.75 ± 0.05 Kg / ℓ
Open Time	: 65 ± 10 Minutes
Full Cure	: 7 Days
Compressive Strength	: 60 ± 5 N/mm ² @ 7 Days
Tensile Adhesion with Concrete	: ≥ 3.5 N/mm ² @ 7 Days
Pull Out Bond Strength on Concrete	: ≥ 5.00 N/mm ² @ 7 Days
Shear Bond Strength	: Concrete Failure

COVERAGE

Approx. 25 - 35 ft² / Kg / Coat.

SHELF LIFE

12 months from the date of manufacturing.



Packaging : Available in
1 Kg, 6 Kg, & 20 Kg

¹The values obtained are from laboratory testing conditions at 27 ± 2°C. On site tests may show slight variation due to site conditions and/or methods of testing/application. Follow company TDS to obtain best results.

ASCOPRIME RUSTCON

Rust converting primer, Rust remover
cum Rust Passivator

- ◆ **ASCOPRIME RUSTCON** is a liquid coating that reacts & converts rust to a stable black protective coating that serves as an excellent primer & rust neutralizer. It prevents further rusting by a passivating coat.
- ◆ **ASCOPRIME RUSTCON** is recommended for use on rusted or partially rusted steel bars or surfaces as a rust converter. The cured coating is impermeable, tough & durable, preventing further corrosion.

RECOMMENDED APPLICATIONS

- ◆ Protection of reinforcement including saline Atmosphere Exposure
- ◆ Used on steel bars prior to encasing in concrete / micro concrete
- ◆ Corrosion protection of all ferrous materials
- ◆ On rusted or partially rusted steel surfaces as a converter / primer
- ◆ Off shore & on shore marine equipments

KEY FEATURES & BENEFITS



Preserves & protects steel objects



No chlorinated solvents



Water based



Fast acting



No need for sand blasting

TECHNICAL SPECIFICATIONS¹

Form	: Liquid
Specific Gravity	: 1.02 ± 0.02 Kg / ℓ @ 25°C
Water Solubility	: Completely Soluble
pH Level	: Approx. 3
Flammability	: Non-Flammable
Touch Dry Time	: 20 ± 5 Minutes

COVERAGE

Approx. 25 - 30 ft² / ℓ / Coat.

30 mm TMT bar (IS 456 : 2000) 100 RFT / coat

SHELF LIFE

12 months from the date of manufacturing.

¹The values obtained are from laboratory testing conditions at 27 ± 2°C. On site tests may show slight variation due to site conditions and/or methods of testing/application. Follow company TDS to obtain best results.



Packaging : Available in
1 & 5 ℓ

ASCOPRIME ZINGUARD

Epoxy Resin Based Zinc Primer For Corrosion Protection

- ◆ **ASCOPRIME ZINGUARD** is an epoxy resin based two components electrochemical zinc primer system having excellent adhesion on steel and corrosion protection for exterior use on new or previously painted steel surfaces.
- ◆ It protects the steel surfaces from rust and corrosion and it also improves the life of all sorts of steel substrates.
- ◆ **ASCOPRIME ZINGUARD** is ideal corrosion resistant primer for exposed steel reinforcement and steel structures at any construction site.

RECOMMENDED APPLICATIONS¹

- ◆ Use as a durable primer coating for all types of steel
- ◆ Steel pipes, railings and gates
- ◆ All sorts of exposed structure including steel girder
- ◆ Fertilizer steel tank
- ◆ Machines
- ◆ Mild steel factory sheds and corrugated MS sheets

KEY FEATURES & BENEFITS



Excellent corrosion protection



Economical and easy to apply



Strong adhesion on metal specially MS



Weather resistant and excellent bond with concrete

TECHNICAL SPECIFICATIONS²

Appearance	: Free flowing grey liquid (Resin : Grey ; Hardener Brown)
Aspect After Drying	: Grey semi glossy film
Specific Gravity	: 1.65 ± 0.50 Kg / Lt.
Mixing Ratio by Wt.	: 4 Parts Resin (A) and 1 Part Hardener (B) ; 4 :1
Pot Life	: 5 to 6 Hours
Touch dry Time	: 20 to 24 Hours
Re Coating Time	: 22 to 24 Hours
Full Curing	: 7 days
Solids	: 75 ± 5 %
Salt Spray	: 300 Hours
Maximum Heat Resistance	: 50 Deg. C (Service Life)
Dry Film Thickness	: 60 to 70 micron (Per Coat)

COVERAGE

55 ± 5 Sq. Ft. / Kg.

SHELF LIFE

12 months from the date of manufacturing.

Packaging : Available in
1 Kg and 5 Kg

ASCOPLUG

An Ultra Rapid Setting Hydraulic Cement Water Plugging Compound

- ◆ **ASCOPLUG** is an ultra-rapid setting water resistant hydraulic cement repair mortar used as an instant water plug.
- ◆ **ASCOPLUG** is used for concrete repairs, active water leaks, hydrostatic pressure water leaks & underwater concrete repairs. This makes it ideal for basement, tunnel, elevator pit & sewer repairs. It is also used for grouting/anchoring & sealing bolts, conduits & pipes.

RECOMMENDED APPLICATIONS

- ◆ Concrete floor & walls
- ◆ Applications include the stopping of running water & seepage through cracks & holes in masonry, walls, dams, wells, tanks, wall & floor junction etc.
- ◆ High build repairs for vertical, overhead & horizontal cracks & damages
- ◆ Recommended for grouting of large gaps

KEY FEATURES & BENEFITS



High strength & controlled expansion



Non-shrinking, non-metallic & non-corrosive



Initial setting in 1 to 3 minutes



Stops running water & leakages



Can be applied underwater



Non-toxic & chloride free

TECHNICAL SPECIFICATIONS¹

Form	: Hydraulic Cement Powder
Colour	: Grey
Bulk Density	: 1000 ± 100 Kg / m ³
Water Demand	: 25%
Setting Time (Final)	: 15 - 20 Minutes
Compressive Strength	: 8 ± 1 N/mm ² @ 1 Days 30 ± 1 N/mm ² @ 28 Days

COVERAGE

30 Kg of Ascoplug bag using 7.5 l of water will yield approximately 17.5 l of plugging compound.

SHELF LIFE

12 months from the date of manufacturing.



Packaging : Available in
1 & 30 Kg

¹The values obtained are from laboratory testing conditions at 27 ± 2°C. On site tests may show slight variation due to site conditions and/or methods of testing/application. Follow company TDS to obtain best results.

ASCOFILL

Single Component Non-Shrink
White Cementitious Crack Filler

- ◆ **ASCOFILL** is a specially modified single component, high strength, non-shrink crack filling powder for repairing of plaster & minor concrete cracks.
- ◆ **ASCOFILL** is ideal for filling cracks up to 5mm in horizontal or vertical areas of buildings & structures.
- ◆ It can be mixed with **ASCOBOND AR** to improve the adhesion & flexibility.

RECOMMENDED APPLICATIONS

- ◆ For crack repairs of all surfaces
- ◆ Repairing brickwork, corners & surfaces
- ◆ For filling small holes, imperfections & suitability primed cracks

KEY FEATURES & BENEFITS



Non-shrink & non sagging



Excellent adhesion with many substrates



Single component & needs to be mixed with only water



Easily applied on vertical & horizontal cracks



Highly economic

TECHNICAL SPECIFICATIONS¹

Form : Free Flow Powder

Colour : White

Setting Time : 20 - 25 Minutes

Bulk Density : 1250 ± 50 Kg/m³

Paint Ability : Paintable

UV Resistance : Yes

Elongation : ≥ 10 %

(When Mixed With Ascobond AR)

COVERAGE

Approx. 55 - 65 gm / RFT/ Kg
5mm x 5mm crack

SHELF LIFE

12 months from the date of manufacturing.



Packaging : Available in
1, 5 & 20 Kg Bag

¹The values obtained are from laboratory testing conditions at 27 ± 2°C. On site tests may show slight variation due to site conditions and/or methods of testing/application. Follow company TDS to obtain best results.

ASCOFILL ES

Multipurpose Acrylic Caulking Compound
And Crack Filling Paste

- ◆ **ASCOFILL ES** is a single component special acrylic latex based multi purpose ready to use acrylic caulking compound which provides excellent high bonding on plastered substrates.
- ◆ It is developed for filling cracks and dent and also finishing the plastered wall or similar interior surfaces.
- ◆ **ASCOFILL ES** is paintable with both latex and oil based paints and it is having exceptional whiteness and smoothness.

RECOMMENDED APPLICATIONS

- ◆ Bonding between plaster substrate and window frame
- ◆ Caulking compound for concrete and door frame
- ◆ Filling for holes and gap before painting
- ◆ Molding and trim
- ◆ Sealing of pipes

KEY FEATURES & BENEFITS



Excellent bonding with various types of substrates



Water proof

Cured caulking compound is mildew resistant



Meets the performance requirements of weathering



Suitable for interior and exterior use

TECHNICAL SPECIFICATIONS¹

Appearance	: Lump free high viscous white paste
Density at 30 degree Celsius	: 1.40 ± 0.05 Kg/l
% Solid Content	: 75 ± 5 By weight
Full Dry Time	: 24 Hours
Touch Dry Time	: 35 ± 5 minutes after application
Extrusion by manual sealant gun	: Easy applicable
Extension Recovery %	: Minimum 75

COVERAGE

25 mt. to 30 mt / Kg (5 mm x 5 mm)

SHELF LIFE

12 months from the date of manufacturing.

Packaging : Available in
200 gm, 500 gm, 1 Kg ,
5 Kg, 20 Kg buckets

ASCOPOXY PUTTY

Epoxy Based High Strength Concrete Repair Putty

- ◆ **ASCOPOXY PUTTY** is an epoxy-based two-component high strength, thixotropic repair mortar. It is designed for the restoration of damaged concrete & floor.
- ◆ **ASCOPOXY PUTTY** provides a thixotropic synthetic mortar with strong adhesion to concrete on vertical & horizontal substrates. It is suitable to use as patch repair system exposed to a wide range of environments. It has high ultimate compressive, flexural & tensile strength.

RECOMMENDED APPLICATIONS

- ◆ Repair of spelled column, beam, slab, pillar, etc.
- ◆ Repair of concrete damaged by rust, corrosion or sea water
- ◆ High build repair for vertical overhead & horizontal applications
- ◆ Repair of damaged concrete floor & panels
- ◆ Ideal for prior application at surface preparation of self levelling coating

KEY FEATURES & BENEFITS



Superior compressive, flexural & tensile strength



High abrasion resistance



Internal & external application



High chemical resistance



Chloride free & inhibits corrosion

TECHNICAL SPECIFICATIONS¹ (IS 9162, ASTM C 109, ISO 9162, ISO 527, ASTM D 638, ASTM C 882)

Appearance	: Resin-Hard Paste (Part A) Hardener-Soft Paste (Part B)
Colour	: Grey/white/yellow/F.Blue/Green (Mixed)
Pot Life	: ≥ 60 Minutes
Open Time	: ≥ 30 Minutes
Solid Content	: $96 \pm 2\%$
Initial Setting Time	: 24 Hours
Final Setting Time	: 7 Days
Compressive strength	: ≥ 60 N/mm ² @ 7 Days
Flexural Strength	: ≥ 20 N/mm ² @ 7 Days
Tensile Strength	: ≥ 10 N/mm ² @ 7 Days
Pull Out Bond Strength on Concrete	: ≥ 2.0 N/mm ² @ 7 Days
Foot Traffic	: 1 day

CONSUMPTION

10 - 12 gm / ft² @ 1mm thickness

SHELF LIFE

12 months from the date of manufacturing



Packaging : Available in

- (a) 4 Kg Resin & 2 Kg Hardener
- (b) 20 Kg Resin & 10 Kg Hardener

¹The values obtained are from laboratory testing conditions at $27 \pm 2^\circ\text{C}$. On site tests may show slight variation due to site conditions and/or methods of testing/application. Follow company TDS to obtain best results.

ASCOREPAIR CRM

Economic, High Strength, Crack Resistance
Concrete Repair Mortar

- ◆ **ASCOREPAIR CRM** is high strength, shrinkage compensated concrete repair mortar. It is a fine-grained one component mortar to smooth out concrete & reinforced concrete, to fill cracks/voids & repair damaged substrates. The range of application is from 5 to 50mm.
- ◆ **ASCOREPAIR CRM** can be mixed with **ASCOBOND 450** to improve the adhesion & flexibility.

RECOMMENDED APPLICATIONS

- ◆ Repair of concrete damaged by reinforcement corrosion or damage
- ◆ Repair of the columns, beams, slab, etc. caused by corrosion of steel
- ◆ High build repairs for vertical, overhead & horizontal repairs
- ◆ Waterproof render to concrete, brickwork & block work
- ◆ Repairs of edges, cracks & holes, etc.
- ◆ Structure & Surface repairs

KEY FEATURES & BENEFITS



Easy to use



High build repairs achievable in a single application



Excellent adhesion



Reinforced with glass fibers



Highly water resistant

TECHNICAL SPECIFICATIONS¹

(ASTM C 109, IS 9162, ASTM C 496, BS 4551, ASTM C 348, ASTM C 496, IS 2770)

Appearance	: Non-Metallic Grey Powder
Water Demand	: 16 ± 2 %
Fresh Wet Density	: 2000 ± 50 Kg/m ³
Workability Time	: 20 ± 5 Minutes
Layer Thickness Per Coat	: 10 - 40mm
Initial Setting Time	: 4 - 5 Hours
Final Setting Time	: 24 Hours
Full Cure Time	: 28 Days
Compressive Strength	: 7 ± 1N/mm ² @ 1 Days 30 ± 1N/mm ² @ 28 Days 15 ± 1N/mm ² @ 7 Days
Tensile Adhesion Strength	: ≥ 3.5 N/mm ² @ 28 Days
Pull Out Bond Strength	: ≥ 2 N/mm ² @ 28 Days
Flexural Strength	: ≥ 3 N/mm ² @ 28 Days
W/P Ratio	: 0.16

COVERAGE

Approx. 25 - 35 ft² / 30 Kg bag
@ 5 - 8mm thickness

SHELF LIFE

6 months from the date of manufacturing



Packaging : Available in
30 Kg & 50 Kg Bag

¹The values obtained are from laboratory testing conditions at 27 ± 2°C. On site tests may show slight variation due to site conditions and/or methods of testing/application. Follow company TDS to obtain best results.

ASCOREPAIR RTM

High Build, High Strength Polymer Modified, Fiber Reinforced, Thixotropic Structural Repair Mortar

- ◆ **ASCOREPAIR RTM** is a high build, strength, fibre reinforced, thixotropic shrinkage compensated structural repair mortar.
- ◆ **ASCOREPAIR RTM** is designed for the restoration of damaged concrete where formwork can't be utilized.

RECOMMENDED APPLICATIONS

- ◆ Repair of concrete damaged by reinforcement corrosion or damage
- ◆ Repair of columns, beams, slab, etc. caused by corrosion of steel
- ◆ High build repairs for vertical, overhead & horizontal repairs
- ◆ Repairs requiring high compressive strength
- ◆ Repairing damaged concrete panels where structural strength is required
- ◆ Structure & Cosmetic repairs

KEY FEATURES & BENEFITS



High build repairs achievable in a single application



Shrinkage compensated allowing for long term dimensional stability



Excellent compressive strength



Exceptional bond strength to concrete substrates



Thixotropic

TECHNICAL SPECIFICATIONS¹

(ASTM C 109, IS 9162, ASTM C 496, ASTM C 496, IS 2770, BS 4551, ASTM C 348)

Appearance	: Non-Metallic Grey Powder
Water Demand	: 16 ± 2 %
Fresh Wet Density	: 2250 ± 50 Kg/m ³
Workability Time	: 20 ± 5 Minutes
Layer Thickness Per Coat	: 5 - 40mm
Initial Setting Time	: 4 - 5 Hours
Final Setting Time	: 24 Hours
Full Cure Time	: 28 Days
Compressive Strength	: 8±1 N/mm ² @1 Days
Tensile Adhesion Strength	: ≥ 3.5 N/mm ² @ 28 Days
Pull Out Bond Strength	: ≥ 2.5 N/mm ² @ 28 Days
Flexural Strength	: ≥ 3 N/mm ² @ 28 Days
W/P Ratio	: 0.16

COVERAGE

Approx. 25 - 35 ft² / 30 Kg bag @ 5 - 8mm thickness

SHELF LIFE

6 months from the date of manufacturing

¹The values obtained are from laboratory testing conditions at 27 ± 2°C. On site tests may show slight variation due to site conditions and/or methods of testing/application. Follow company TDS to obtain best results.



Packaging : Available in
30 Kg & 50 Kg Bag

ASCOREPAIR ERM

Moisture Insensitive Epoxy Based High Strength
Repare Mortar

- ◆ **ASCOREPAIR ERM** is specially formulated to perform structural repairs to any overhead, vertical or inclined concrete surfaces.
- ◆ Consisting of 2 parts & 3 parts resin, hardener & special fillers having advanced additives to form a high strength epoxy mortar.

RECOMMENDED APPLICATIONS

- ◆ Repair of any overhead, vertical or inclined concrete surfaces
- ◆ Repair of columns, beams, slab, etc. caused by corrosion of steel
- ◆ Anchoring & gap filling adhesive
- ◆ Adhesive for metal, wood, stone & many substrates
- ◆ Industrial floor repairs & toppings

KEY FEATURES & BENEFITS



Ultimate compressive & flexural strength



Excellent resistance to abrasion & impact



Suitable for early submersion



Resistant to most diluted acids/alkalis & petroleum chemical products



Excellent adhesion with many substrates



High vibration resistant

TECHNICAL SPECIFICATIONS¹

(ASTM C 579, ISO 527, ASTM D 638, BS 6319, ASTM C 882, BS 4551, ASTM C 348, ASTM D 790, ASTM D 648, H6)

Appearance	II Part III Part	: Coarse Paste (A) & Hardener (B) Resin (A), Hardener (B) & Grey Powder (C)
Fresh Wet Density		: 2200 ± 50 Kg/m ³
Workability Time		: 20 ± 5 Minutes
Initial Setting Time		: 6 - 8 Hours
Final Setting Time		: 24 Hours
Full Cure Time		: 7 Days
Compressive Strength		: ± 65 N/mm ² @ 7 Days
Tensile Adhesion Strength		: ± 10 N/mm ² @ 7 Days
Pull Out Bond Strength		: ± 3 N/mm ² @ 7 Days
Flexural Strength		: ± 18 N/mm ² @ 7 Days
Heat Deflection Temperature		: > 45 °C

COVERAGE*

65 - 70 gm / ft² @ 3mm thickness

*subject to surface smoothness

SHELF LIFE

12 months from the date of manufacturing

¹The values obtained are from laboratory testing conditions at 27 ± 2°C. On site tests may show slight variation due to site conditions and/or methods of testing/application. Follow company TDS to obtain best results.



Packaging : Available in
Bucket - 12 Kg & 24 Kg Set (II Part)
Box - 24 Kg Set (III Part)

ASCOREPAIR RAPID

Rapid Hardening, High Build Cementitious Mortar

- ◆ **ASCOREPAIR RAPID** is an ultimate high-performance rapid-setting repair mortar where engineers require a rapid outcome in the most difficult application environments.
- ◆ **ASCOREPAIR RAPID** incorporates high-grade cement systems & advanced polymer additives to form a cementitious mortar that is chloride & sulphate resistant.

RECOMMENDED APPLICATIONS

- ◆ Repair of columns, beams, slab, etc. caused by corrosion of steel
- ◆ Repairs of RCC bridge & road
- ◆ Industrial floor repairs & toppings
- ◆ Repairs to airport runways
- ◆ High build repairs for vertical, overhead & horizontal repairs
- ◆ Repairs of highways, parking, ramps etc.

KEY FEATURES & BENEFITS



Rapid cure



Suitable for early submersion



Chloride & sulphate resistant



Dual shrinkage compensated



High early strength

TECHNICAL SPECIFICATIONS¹ (W/P ratio : 0.16)

Appearance	: Non-Metallic Grey Powder
Water Demand	: 16 ± 2 %
Fresh Wet Density	: 2250 ± 50 Kg/m ³
Workability Time	: 10 ± 5 Minutes
Layer Thickness Per Coat	: 10 - 80mm
Initial Setting Time	: 30 - 40 Minutes
Final Setting Time	: 2 - 3 Hours
Full Cure Time	: 28 Days
Compressive Strength (ASTM C 109, IS 9162)	: ≥ 45 N/mm ² @ 7 Days ≥ 55 N/mm ² @ 28 Days
Tensile Adhesion Strength (ASTM C 496)	: ≥ 3.5 N/mm ² @ 28 Days
Pull Out Bond Strength (ASTM C 496, IS 2770)	: ≥ 2.5 N/mm ² @ 28 Days
Flexural Strength (BS 4551, ASTM C 348)	: ≥ 3 N/mm ² @ 28 Days
Curing	: 7 Days

COVERAGE

Approx. 25 - 35 ft² / 30 Kg bag @ 5 - 8mm thickness

SHELF LIFE

6 months from the date of manufacturing



Packaging : Available in
30 & 50 Kg Bag

¹The values obtained are from laboratory testing conditions at 27 ± 2°C. On site tests may show slight variation due to site conditions and/or methods of testing/application. Follow company TDS to obtain best results.

ASCOCRETE MC (20,40,60) High Strength, Deep Pour Structural Micro Concrete

- ◆ **ASCOCRETE MC 60** is a pre-mixed of advanced cement, specially graded aggregates & special polymers to give high strength, free-flowing, structural micro-concrete suitable for large volume grouting or repair applications of concrete.
- ◆ **ASCOCRETE MC 60** is non-metallic grout & with incorporated additives, which is also free from chlorides & is dual shrinkage compensated to completely fill voids from 10-120mm in a single layer, ensuring the transfer of loads whilst developing excellent compressive strength.

RECOMMENDED APPLICATIONS

- ◆ Repair of concrete damaged by reinforcement corrosion or damage
- ◆ Repairs of columns, beams, slab, etc. caused by corrosion of steel
- ◆ High build repairs for vertical, overhead & horizontal repairs
- ◆ Recommended for grouting of large gaps

KEY FEATURES & BENEFITS



Economical



Dual shrinkage compensated allowing for long term dimensional stability



Flowable structural repair concrete for large volume repairs



High ultimate strength



Good bonding with old concrete

TECHNICAL SPECIFICATIONS¹ (ASTM C 109, IS 9162, ASTM C 496, ASTM C 496, IS 2770, BS 4551, ASTM C 348)

	20	40	60
Appearance	: Non-Metallic Grey Powder		Non-Metallic Grey Powder
Water Demand	: 15 ± 2 %		18 ± 2 %
Fresh Wet Density			2300 ± 50 Kg/m ³
Workability Time			20 ± 5 Minutes
Initial Setting Time	: 2 Hours		2 - 3 Minutes
Final Setting Time	: 4 Hours		6 - 8 Hours
Full Cure Time			28 Days
Compressive Strength	: ≥ 10 N/mm ² @ 7 Days ≥ 20 N/mm ² @ 28 Days		≥ 45 N/mm ² @ 7 Days ≥ 65 N/mm ² @ 28 Days
Tensile Adhesion Strength	≥ 1.0 N/mm ² @ 28 Days		≥ 3.5 N/mm ² @ 28 Days
Pull Out Bond Strength			≥ 2.5 N/mm ² @ 28 Days
Flexural Strength	: ≥ 2.0 N/mm ² @ 28 Days		≥ 8 N/mm ² @ 28 Days

YIELD

15 - 17l/30Kg @ 0.18 ± 0.02% W/P Ratio

SHELF LIFE

6 months from the date of manufacturing



Packaging : Available in
30 & 50 Kg Bag

¹The values obtained are from laboratory testing conditions at 27 ± 2°C. On site tests may show slight variation due to site conditions and/or methods of testing/application. Follow company TDS to obtain best results.

ASCOGROUT (40, 50)

General Purpose, Early Strength
Non-shrink Cementitious Grout

- ◆ **ASCOGROUT 40** is a pre-mixed cement based, non-ferrous, non-shrink grout, exhibiting good flow characteristics. This economical & high performance cementitious grout offers the advantage of low water requirements and medium to high compressive strengths.
- ◆ **ASCOGROUT 40** is a ready-to-use dry powdered product requiring only the addition of water to be used for a wide range of applications.

RECOMMENDED APPLICATIONS

- ◆ Heavy equipment
- ◆ Bedding joints in precast concrete
- ◆ Filling gaps in RCC
- ◆ Pre-cast concrete
- ◆ Bearing plates
- ◆ Steel columns
- ◆ Anchoring applications

KEY FEATURES & BENEFITS



Non-shrink



Good compressive strength



For external & internal applications



Provides placement versatility – trowel, pour, pump



Chloride free, non-corrosive & non-ferrous



No staining

TECHNICAL SPECIFICATIONS¹ (ASTM C 109, IS 4031- part 6, IS 2770, ASTM D 469)

Appearance	: Non-Metallic, Free Flowing Grey Powder
Water Demand	: Flowable: 16 ± 1 % Pourable: 18 ± 1 %
Fresh Wet Density	: 2200 ± 100 Kg/m ³
Flow on Table	: 300 ± 20 mm @ 18% W/P
Pot Life	: 50 ± 10 Minutes
Workability	: 25 ± 5 Minutes
Initial Setting Time	: 2 - 3 Hours
Layer Thickness (Single Pour)	: 20 - 80mm
Water Curing	: 7 Days
Compressive Strength Cured in water tank	: 1 Day : ≥ 10 N/mm ² 7 Days : ≥ 30 N/mm ² 28 Days : ≥ 42 N/mm ²
Pull Out Bond Strength to Steel	: ≥ 20 N/mm ² @ 28 Days
E-modulus	: ≥ 20 kN/mm ² @ 28 Days
W/P Ratio	: 0.18±0.01

YIELD

13 - 16 l / 30 Kg @ 0.16 - 0.18% W/P Ratio

SHELF LIFE

6 months from the date of manufacturing



Packaging : Available in
20 Kg & 30 Kg

¹The values obtained are from laboratory testing conditions at 27 ± 2°C. On site tests may show slight variation due to site conditions and/or methods of testing/application. Follow company TDS to obtain best results.

ASCOGROUT (65, 80)

Multipurpose, Single Component High
Early Strength Non-shrink Precision Grout

- ◆ **ASCOGROUT 65** is a specially modified multipurpose, high flow, non-shrink & cementitious precision grout specially designed to maintain its strengths at various consistencies from flowable to trowelable.
- ◆ **ASCOGROUT 65** produces high strength, plastic expansion, excellent substrate adhesion & durability. The low water demand ensures high early strength.

RECOMMENDED APPLICATIONS

- ◆ Heavy equipment quality
- ◆ Filling gaps in RCC
- ◆ Pre-cast concrete
- ◆ Post fixing
- ◆ Bearing plates
- ◆ Steel columns
- ◆ Anchoring application
- ◆ Anchoring reinforcement

KEY FEATURES & BENEFITS



Non-shrink, shrinkage compensated



Excellent bond strength



Free flow grout



Excellent adhesion with many substrates



Non-corrosive & Non-toxic



Impact resistant

TECHNICAL SPECIFICATIONS¹

(ASTM C 928, ASTM C 109, IS 4031- part 6, BS 1881, part 116, IS 2770, ASTM D 469 - 94)

Appearance : Non-Metallic, Free Flowing Grey Powder

Water Demand : Flowable: $16 \pm 1\%$
Pourable: $18 \pm 1\%$

Fresh Wet Density : $2200 \pm 100 \text{ Kg/m}^3$

Flow on Table : $300 \pm 20\text{mm}$ @ 18% W/P Ratio

Pot Life : 50 ± 10 Minutes

Workability : 25 ± 5 Minutes

Initial Setting Time : 2 - 3 Hours

Layer Thickness (Single Pour) : 20 - 80mm

Expansion under unrestrained conditions : $\leq 2\%$ Within 2 Hours

Water Curing : 7 Days

Compressive Strength : 1 Day : $15 \pm 1 \text{ N/mm}^2$
7 Days : $40 \pm 1 \text{ N/mm}^2$
28 Days : $66 \pm 1 \text{ N/mm}^2$
Cured in water tank

Pull Out Bond Strength to Steel : 20 N/mm^2 @ 28 Days

E-modulus : 20 kN/mm^2 @ 28 Days

W/P Ratio : 0.18 ± 0.01

YIELD

13 - 16 ℓ / 30 Kg @ 0.16 - 0.18 W/P Ratio

SHELF LIFE

6 months from the date of manufacturing



Packaging : Available in
30 Kg & 50 Kg Bag

¹The values obtained are from laboratory testing conditions at $27 \pm 2^\circ\text{C}$. On site tests may show slight variation due to site conditions and/or methods of testing/application. Follow company TDS to obtain best results.

ASCOGROUT GG (20,50,65)

Versatile & High Early Strength Non-shrink Pumpable Gun Grade Cementitious Grout

- ◆ **ASCOGROUT 50 GG** is a specially engineered, cement-based, non-ferrous, non-shrink gun grade grout. This economical & high-performance cementitious grout offers the advantage of medium to high compressive strengths.
- ◆ **ASCOGROUT 50 GG** is ideal for general purpose construction site applications where the major emphasis is on ease of application.

RECOMMENDED APPLICATIONS

- ◆ Tie rods hole
- ◆ Filling gaps in RCC
- ◆ Pre-cast concrete
- ◆ Bearing plates
- ◆ Anchoring applications

KEY FEATURES & BENEFITS



Non-shrink



High early strength



Chloride free



Provides placement versatility - pour, gun, pump



Non-ferrous

TECHNICAL SPECIFICATIONS¹ (W/P ratio : 0.23 ± 0.02)

Appearance	: Non-Metalic, Free Flowing Grey Powder
Water Demand	: Gunnable: 23 ± 2 %
Fresh Wet Density	: 1900 ± 100 Kg/m ³
Flow on Table	: 180 ± 20mm @ 0.25 W/P Ratio
Pot Life	: 80 ± 10 Minutes
Workability	: 60 ± 5 Minutes
Initial Setting Time	: 4 - 5 Hours
Expansion Under Unrestrained Conditions	: ≤ 1 % Within 2 Hours
Compressive Strength (ASTM C 109, IS 4031- part 6) Cured in water tank	: 1 Day : 10 ± 1 N/mm ² 7 Days : 35 ± 2 N/mm ² 28 Days : 52 ± 2 N/mm ²
Pull Out Bond Strength to Steel (IS 2770)	: ≥ 20 ± 2 N/mm ² @ 28 Days
E-modulus (ASTM D 469 - 94)	: ≥ 20 ± 2 kN/mm ² @ 28 Days

YIELD

13 - 16 ℓ / 30 Kg @ 0.21 - 0.25 W/P Ratio

SHELF LIFE

6 months from the date of manufacturing



Packaging : Available in
30 Kg & 50 Kg Bag

¹The values obtained are from laboratory testing conditions at 27 ± 2°C. On site tests may show slight variation due to site conditions and/or methods of testing/application. Follow company TDS to obtain best results.

ASCOGROUT EP - LV

2 Part, Low Viscous Non-shrink
Epoxy Injection Grout

- ◆ **ASCOGROUT EP - LV** is a two-part, very low viscous, non-shrink epoxy grout based on specially selected epoxy resin & hardeners to produce a highly fluid grout for injection into cracks in concrete.
- ◆ **ASCOGROUT EP - LV** is highly penetrative in structural injection & grouting repairs. It can be used as a primer for porous concrete or as a sealer for floor toppings.

RECOMMENDED APPLICATIONS

- ◆ Repair of concrete damaged by reinforcement corrosion or damage
- ◆ Repairs to columns, beams, slab, etc. caused by corrosion of steel
- ◆ High build repairs for vertical, overhead & horizontal repairs
- ◆ Recommended for grouting of gaps up to 9mm

KEY FEATURES & BENEFITS



Highly versatile & durable



Dual shrinkage compensated allowing for long term dimensional stability



Flowable structural repair grout for large volume repairs



High ultimate strength



High bonding with old concrete

TECHNICAL SPECIFICATIONS¹

(ASTM C 109, IS 4031- part 6, ASTM D 638, ASTM D 790, ASTM D 469, ASTM C 882)

Appearance	: Clear Resin (Part A) Pale Yellow Hardener (Part B)
Mixing Ratio	: 2 : 1 (A : B)
Fresh Wet Density	: 1070 ± 50 Kg/m ³
Viscosity on Brookfield (ASTM D 1084)	: 250 ± 50 cps
Pot Life	: 40 ± 5 Minutes
Workability	: 30 ± 5 Minutes
Initial Setting Time	: 6 - 8 hours
Compressive Strength <i>Cured in water tank</i>	: 1 Day : 50 ± 2 N/mm ² 7 Days : 70 ± 5 N/mm ²
Tensile Strength	: 18 ± 2 N/mm ²
Flexural Strength	: 8 ± 1 N/mm ²
E-modulus	: 0.004 MPa
Slant Shear Bond with Concrete	: 35 ± 2 N/mm ² @ 7 Days

YIELD

Approx. 165 - 175 gm / RFT
@ 1 mm x 1 mm gap

SHELF LIFE

12 months from the date of manufacturing.

¹The values obtained are from laboratory testing conditions at 27 ± 2°C. On site tests may show slight variation due to site conditions and/or methods of testing/application. Follow company TDS to obtain best results.



Packaging : Available in
1.5 Kg

ASCOGROUT EP

100 General Purpose, Moisture Insensitive,
High Strength, Flowable Epoxy Resin Grout

- ◆ **ASCOGROUT EP 100** is a 3 component, 100% solids, VOC free, epoxy resin system designed specifically for pours from 8mm to 200mm.
- ◆ **ASCOGROUT EP 100** offers high strength development, chemical resistance & excellent flow characteristics. **ASCOGROUT EP 100** shows good impact resistance.

RECOMMENDED APPLICATIONS

- ◆ Heavy equipment
- ◆ Anchor bolts & sleeves
- ◆ Heavy compressors, generators, crushers
- ◆ Bridge bearings
- ◆ Crane rail & rail track grouting
- ◆ Machine bases
- ◆ Bearing plates
- ◆ Steel columns
- ◆ Wind turbine base plate grouting

KEY FEATURES & BENEFITS



Excellent flexural, compressive strength



Thermal stability during application



Excellent adhesion with many substrates



High degree of chemical resistance



Free flow ensures the high level of contact with bearing area



Excellent vibration & creep resistance

TECHNICAL SPECIFICATIONS¹

Appearance	: Part A Resin, Part B Hardener & Part C Cement Grey filler
Mixing Ratio	: 2:1:8 (A : B : C)
Fresh Wet Density	: 1900 ± 50 Kg/m ³
Flow on Table	: 240 ± 10mm
Pot Life	: 40 ± 5 Minutes
Workability	: 25 ± 5 Minutes
Initial Setting Time	: 4 - 5 Hours
Layer Thickness (Single Pour)	: 8 - 50mm
Compressive Strength (ASTM C 109, IS 4031- part 6) <i>Cured in water tank</i>	: 1 Day : ≥ 40 N/mm ² 7 Days : ≥ 60 N/mm ²
Pull Out Bond Strength to Steel (ASTM C 882)	: ≥ 20 ± 2 N/mm ²
E-modulus	: 0.004 MPa

YIELD

250 ± 25 gm / 10 ft² @ 8mm thickness

SHELF LIFE

12 months from the date of manufacturing.



Packaging : Available in
1 & 5 Kg

¹The values obtained are from laboratory testing conditions at 27 ± 2°C. On site tests may show slight variation due to site conditions and/or methods of testing/application. Follow company TDS to obtain best results.

ASCOTOP FH

111 Non-metallic, Hard Wearing
Dry Shake Floor Hardener

- ◆ **ASCOTOP FH 111** is a mixture of finely graded non-metallic quartz aggregates, plasticizer & cement binder.
- ◆ When applied at the proper point in the concrete setting cycle, it's worked into the concrete to become an integral part of the floor to provide a surface that is highly resistant to abrasion & impact.
- ◆ Provides a high-density surface that resists liquid penetration & is easy to clean & maintain.

RECOMMENDED APPLICATIONS

- ◆ Strengthening of concrete floors in factories, distribution centers & warehouses
- ◆ Improving of surface sheen in polished concrete applications
- ◆ Fast track finishing of commercial floors as an alternative to coatings & sealers

KEY FEATURES & BENEFITS



Provides hard, durable & impact resistant floor



Shrinkage compensated & non-rusting



Internal & external application



Chloride free



High abrasion resistance

TECHNICAL SPECIFICATIONS¹ (ASTM C 109, IS 9162, BS 6319, IS 1237:1980, IS 13630-13, 2006)

Form	: Non-metallic Free Flow Granular Powder
Colours	: Natural Grey, Terracota, Green, Yellow etc.
Initial Setting Time	: 2-3 Hours
Final Setting Time	: 12 Hours
Compressive Strength	: 19±1 N/mm ² @ 28 Days
Abrasion Resistance	: Approx. 1.6mm loss
Mohs Hardener	: > 7
Layer Thickness	: 2.5 to 3.0mm at dosage of 5.0 Kg/m ²
Time to Traffic	: Foot : 1 - 2 Days Light Vehicular : 7 - 8 Days Heavy Vehicular : 28 Days
Curing	: 7 Days

CONSUMPTION

Light Duty Traffic : 2.5 - 3.5 Kg/10 ft²

Medium Duty Traffic : 4.0 - 5.0 Kg/10 ft²

Heavy Duty Traffic : 5.0 - 6.0 Kg/10 ft²

SHELF LIFE

12 months from the date of manufacturing.

¹The values obtained are from laboratory testing conditions at 27 ± 2°C. On site tests may show slight variation due to site conditions and/or methods of testing/application. Follow company TDS to obtain best results.



Packaging : Available in
30 Kg & 50 Kg Bag

ASCOCRETE OVERLAY

Highly Durabale Overlay for Stamped Concrete

- ◆ **ASCOCRETE OVERLAY** is a stampable cement based overlay for beautifying interior and exterior surface.
- ◆ This is for making textures which resemble a whole array of designer tiles, cut stone, brick and cobble stone. etc. with traditional concrete stamping tools.

RECOMMENDED APPLICATIONS

- ◆ Surface protection of new and existing old concrete floors
- ◆ Restoration, repair and resurfacing
- ◆ Architectural use for decoration

KEY FEATURES & BENEFITS

Appearance of stamped and decorative concrete



Internal or external surafce



Makes surfaces easier to clean



Excellent making resistance



Good water penetration resistance



Superior resistance to ultraviolet light, freeze/thaw cycling and acid rain

TECHNICAL SPECIFICATIONS¹

Appearance	: Free flowing powder
Bulk Density	: 2100 ± 100 kg/m ³
Compressive Strength	: 30 Mpa (28 days curing)
Flexural Strength	: Around 6 Mpa (28 days curing)
Abrasion Resistance	: Less than 50 %
UV Resistance	: Very good
Acid & Alkali Resistance	: Excellent
Moisture Retention	: 0.40 kg/m ²

COVERAGE

2m²/ 20 kg @5-6 mm thicknes

SHELF LIFE

6 months from the date of manufacturing.

Packaging : Available in
20 Kg Bag.

ASCOTOP FH

333 Metallic Hard Wear Dry
Shake Floor Hardener

- ◆ **ASCOTOP FH 333** is an anti-corrosive metallic granules based floor hardener formulated from graded aggregates, modified cement & special additives to provide a durable, non-oxidizing, dense & smooth surface with high abrasion & wear resistance.
- ◆ When incorporated into fresh concrete floors it will provide a durable surface, diamond-like hardness, that will stand.

RECOMMENDED APPLICATIONS

- ◆ Strengthening of concrete floors
- ◆ Fast track finishing of commercial floors
- ◆ For improving the surface sheen in polished concrete applications

KEY FEATURES & BENEFITS



Chloride free



Shrinkage compensated & non-rusting



Internal & external application



Improves impact resistance



High abrasion resistance & non-dusting

TECHNICAL SPECIFICATIONS¹ (ASTM C 109, IS 9162, BS 6319, IS 1237:1980, IS 13630-13, 2006)

Form : Non-metallic Free Flow Granular Powder

Colours : Natural Grey, Terracota, Green, Yellow etc.

Initial Setting Time : 2-3 Hours

Final Setting Time : 12 Hours

Compressive Strength : 15± N/mm² @ 1 Days

Abrasion Resistance : Approx. 1.6mm loss

Mohs Hardener : > 8

Layer Thickness : 2.5 to 3.0mm at dosage of 5.0 Kg/m²

Time to Traffic : Foot : 1 - 2 Days
Light Vehicular : 7 - 8 Days
Heavy Vehicular : 28 Days

Curing : 7 Days

CONSUMPTION

- ◆ For Light duty 2.5 - 3.5 kg/10 ft²
- ◆ For Medium duty 4.0 - 5.0 kg/10 ft²
- ◆ For Heavy duty 5.5 - 6.0 kg/10 ft²

SHELF LIFE

12 months from date of manufacturing.



Packaging : Available in
30 Kg & 50 Kg Bag

¹The values obtained are from laboratory testing conditions at 27 ± 2°C. On site tests may show slight variation due to site conditions and/or methods of testing/application. Follow company TDS to obtain best results.

ASCOPRIME PS

Single Part Primer for
Polyurethane Sealant

- ◆ **ASCOPRIME PS** is an advanced polyurethane primer having excellent adhesion & sealing qualities for various porous & non-porous substrates & it improves the bonding of the polyurethane sealant as well as gun grade & pouring grade polysulfide sealant with standard substrates.
- ◆ **ASCOPRIME PS** is a solvent-based low viscosity penetrating primer suitable for use on metal, wood, steel & cement-based substrates.

RECOMMENDED APPLICATIONS

- ◆ All sorts of porous & non-porous surfaces
- ◆ Residential, commercial & industrial sites
- ◆ Wood, concrete, masonry & painted surfaces
- ◆ Adhesion for use in immersion situations
- ◆ Vitrified tiles, marble, stone, granite, slate, etc.

KEY FEATURES & BENEFITS



Seals porous surfaces & makes it waterproof



Excellent adhesion



Fast drying



Can be used on internal or external surfaces



Suitable for use with polysulfide & polyurethane

TECHNICAL SPECIFICATIONS¹

Appearance	: Light Brown Clear Liquid
Specific Gravity	: 1.00 ± 0.05 Kg / ℓ
Drying Time	: 25 ± 10 Minutes (depends on type of surface)
Pull Out Adhesion Strength	: 1 N/mm ² with concrete surface after 7 days

COVERAGE

80 - 100 ft² / ℓ / coat
(subject to substrate condition)

SHELF LIFE

12 months from the date of manufacturing.



Packaging : Available in 1 ℓ

¹The values obtained are from laboratory testing conditions at 27 ± 2°C. On site tests may show slight variation due to site conditions and/or methods of testing/application. Follow company TDS to obtain best results.

ASCOSEAL

PS High Performance, Two Part
Elastomeric Polysulphide Joint Sealant

- ◆ **ASCOSEAL PS** specifically designed to be used as a watertight seal for moderate movement & control joints in horizontal & vertical areas.
- ◆ **ASCOSEAL PS** is based on a liquid polysulphide polymer, when mixed with the hardener, cures to form a tough, flexible & non-staining rubber-like seal.

RECOMMENDED APPLICATIONS

- ◆ Sealing structural floor joints
- ◆ Expansion joints
- ◆ Underpasses & tunnels
- ◆ Bridges
- ◆ Airport runways
- ◆ Industrial warehouses
- ◆ Pre-cast structures
- ◆ Retaining wall

KEY FEATURES & BENEFITS



Tough & resilient seal



Excellent adhesion to many substrates



Provides permanent & uniform watertight seal



Non-staining



Permanently elastic

TECHNICAL SPECIFICATIONS¹

Chemical Base	: Polysulphide, Grey
Variants	: Pour Grade (PG) & Gun Grade (GG)
Density (ISO 1183)	: 1.7 ± 0.2 Kg / ℓ
Sag Flow (ISO 7390)	: PG: 3 - 4mm (20mm Profile) GG: 0mm (20mm Profile)
Final Cure @ Standard Conditions	: 24 Hours
Elongation (ISO 37)	: 400 ± 50%
Movement Capacity (MAV) (IS 12118)	: ± 25 % of Average Joint Width
Adhesion to concrete (IS 2770)	: 2.5 ± 0.5 N/mm ² @ 7 Days
Shore A Hardness (ASTM D 2240, ISO 868)	: PG: > 15 ± 3 @ 7 Days GG: > 20 ± 3 @ 7 Days
Service Temperature	: 0 °C to +90 °C

COVERAGE

$$L = \frac{625(\text{PG})}{W \text{ in mm} \times D \text{ in mm}} \quad L = \frac{650(\text{GG})}{W \text{ in mm} \times D \text{ in mm}}$$

L = Length of joint in linear mtr.

W = Width of joint (mm)

D = Depth of joint (mm)

SHELF LIFE

6 months from the date of manufacturing.



Packaging : Available in
4 Kg set

¹The values obtained are from laboratory testing conditions at 27 ± 2°C. On site tests may show slight variation due to site conditions and/or methods of testing/application. Follow company TDS to obtain best results.

ASCOSEAL PU

Single Part Low Modulus
Polyurethane Sealant

- ◆ **ASCOSEAL PU** is a single part, low modulus, self-curing & VOC compliant polyurethane sealant.
- ◆ **ASCOSEAL PU** has fast curing properties that develops into a strong, durable & weather resistant seal & exhibits excellent adhesion to a wide variety of substrates.

RECOMMENDED APPLICATIONS

- ◆ Masonry
- ◆ Concrete
- ◆ Aluminium
- ◆ Glass
- ◆ Cement Sheet
- ◆ Steel
- ◆ Ceramic
- ◆ Timber

KEY FEATURES & BENEFITS



Ready to use & easy to apply



Excellent resistance to ageing / weathering making it suitable for interior & exterior use



Paintable once cured (White)



Fast curing



Excellent adhesion with many structures

TECHNICAL SPECIFICATIONS¹

Chemical Base	: Polyurethane, White / Grey
Density (ISO 1183)	: 1.3 ± 0.5 Kg / l
Sag Flow (ISO 7390)	: 0mm (20mm Profile)
Tack Free Time	: 1 Hour
Rate of Curing	: 3mm for Initial 24 Hours
Final Cure @ Standard Conditions	: 7 Days
Elongation (ISO 37)	: 800 ± 50%
Movement Capacity (MAV) (IS 12118)	: ± 35 % of Average Joint Width
Adhesion to concrete (IS 2770)	: 2.5 ± 0.5 N/mm ² @ 7 Days
Shore A Hardness (ASTM D 2240, ISO 868)	: 35 ± 5 @ 7 Days
Service Temperature	: -40 °C to +70 °C

COVERAGE

$$L = \frac{W \text{ (mm)} \times D \text{ (mm)} \times L \text{ (mtr)}}{1000}$$

L = Length of joint in linear meter

W = Width of joint (mm)

D = Depth of joint (mm)

SHELF LIFE

9 months from the date of manufacturing.



Packaging : Available in
600 ml cartridge

¹The values obtained are from laboratory testing conditions at 27 ± 2°C. On site tests may show slight variation due to site conditions and/or methods of testing/application. Follow company TDS to obtain best results.



Walling Solutions



Waterproofing Systems



Screeds, Tiles/Stone Adhesives & Grouts



Structural Repairs, Sealants & Grouts



Protective Coatings



Aswani Industries Pvt. Ltd.

Head Office: Top Floor, Ascon City, Opp. Maheshwari Bhavan,
City Light Road, Surat - 395007, Gujarat

Factory: Block No. 161, Opp. Garden Silk Mills, Kadodara Bardoli Road,
Vill.: Tantithaiya, Tal. Palsana, Surat - 394305, Gujarat.



1800 532 7788



www.ascolite.in



info@ascolite.in



Disclaimer: - Details mentioned in this catalogue are in brief. Refer TDS, method statement & other details by contacting company representative & by visiting the company website. AIPL will not be responsible for any damages with respect to inappropriate application &/or site conditions. Aswani Industries Pvt. Ltd. (AIPL) has a policy of ongoing design & development & thus reserves the right to modify specifications without prior notice. It is advised to cross-check with the company representative to ensure the document referred is the latest update.

Version 3.00

