



**ascolite**<sup>®</sup>  
A Better Solution

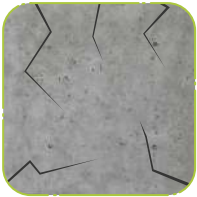
**STRUCTURAL REPAIRS  
SEALANTS & GROUTS**

## Experience the ascolite advantage...

The Ascolite advantage is product offerings that are backed by expertise. The insights provided by us combine with cutting-edge service standards, resulting in pampered & content clients.

As Ascolite, we swear by the mantra "Growing Relationships" & have proven dependability in all product offerings.

# SPEED & CONSISTENCY GUARANTEED



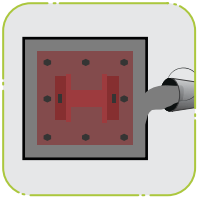
### Crack Repairs

Solutions for all types of cracks ranging from 1 mm-10 mm for various types, including structural cracks & masonry cracks.



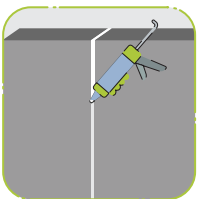
### Bonding Agents

Multiple solutions for bonding old to new concrete, steel to concrete, masonry to concrete & renders to concrete.



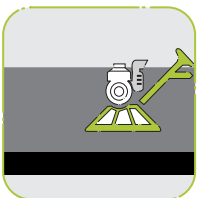
### Non-Shrink Grouts

Shrinkage crack free dynamic grouting solutions with cement based & synthetic resin based formulations upto 100 N/mm<sup>2</sup> compressive strength.



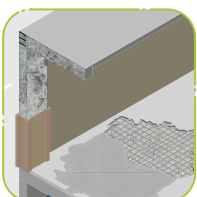
### Sealants

Flexible caulking & sealing solutions for various joints like expansion joints, bigger cracks & other structural gaps.



### Floor Hardener

Dry Shake topping compound for preparing high abrasion resistant floors, metallic & non-metallic, available in various colours.



### Structure Repairs

Cementitious & resin based high strength mortars & concrete pre-mixes for all types of structural repairs.

## Content

---

### About Us

- Group Introduction 02
  - Company Introduction 03
- 

### Bonding Agents

- Ascobond 450 04
  - Ascobond EP 05
- 

### Structural Repairs

- Ascoprime Rustcon 06
  - Ascoprime Zincguard 07
  - Ascoplug 08
  - Ascofill ES 09
  - Ascopoxy Putty 10
  - Injection PU 11
  - Ascopoxy Putty 12
  - Ascorepair CRM 13
  - Ascorepair RTM 14
  - Ascorepair ERM 15
  - Ascorepair Rapid 16
  - Ascocrete MC (20, 40, 60) 17
- 

### Non-Shrink Grouts

- Ascogrout (40, 50) 18
  - Ascogrout (65, 80) 19
  - Ascogrout GG (20, 50, 65) 20
  - Ascogrout EP - LV 21
  - Ascogrout EP 100 22
- 

### Floor Hardeners

- Ascotop FH 111 23
  - Ascotop FH 333 24
  - Ascocrete overlay 25
- 

### Sealants

- Ascoprime PS 26
- Ascoseal PS 27
- Ascoseal PU 28

## OUR GROUP



### Ascon Group of Developers

Headquartered in Surat (Gujarat) the group has over 4 decades of experience and is a diversified business group, comprising of construction, manufacturing, processing and trading.



#### Ascolite:

Since 2012.  
Manufacturing & supplying of building materials.



#### Ascon Realty:

Since 1995.  
Developing premium high rise towers in the city of Surat, under the brand 'SURYA'.



#### Geetatex:

Since 1980.  
Trading of sarees & dress materials to textile processing & embroidery.

## ABOUT ASCOLITE

# Ascolite®

A Better Solution

### Aswani Industries Private Limited

Ascolite is marketed by Aswani Industries Pvt. Ltd. (formerly known as Aswani Construction Pvt. Ltd.) The introduction of Ascolite was a new direction by the group to vertically growing to building materials from construction.

The first step taken to promote Ascolite was by establishing the largest state-of-the-art Fly Ash Blocks (Aerated Autoclave) manufacturing facility at Surat (Gujarat) & today Ascolite has over 100 products in Walling, Tile-fixing, Waterproofing & Construction Chemicals.

## PRODUCT RANGE

Walling Solutions



Screeds, Tiles/Stone Adhesives & Grouts



Construction Chemicals



Waterproofing Systems



Structural Repairs, Sealants & Grouts



Protective Coatings



## ASCOLITE ADVANTAGE

### Production Capacity

State of the art production facilities for :

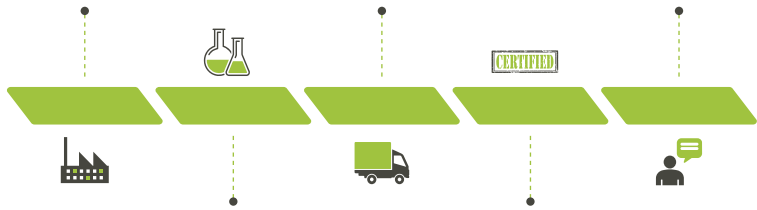
- ◆ Fly Ash Blocks (Aerated Autoclaved)
- ◆ Dry-Mix Products
- ◆ Construction Chemicals

### Own Fleet of Vehicles

Commendable fleet strength of our own, which empowers us to deliver material on time.

### Technical Assistance

The aim of educating industry people on finer aspects of new age construction materials & its application.



### State of the art R&D Lab

Industry edge-cutting, well equipped R&D centre in Surat (Gujarat).

### Quality Certified Products

We take a holistic approach to quality & consistency, which is key to the company's entire philosophy.

## CORE IDEOLOGY



### Core Purpose

To encourage & ensure a paradigm shift in delivering trendsetting experiences.



### Mission Statement

To deliver contemporary construction solutions backed by expertise, based on novel market needs.



### Core Values

- ◆ Quest to learn
- ◆ Integrity
- ◆ Energetic
- ◆ Eye for detail
- ◆ Making a difference

## CUSTOMERS

Over 500 satisfied customers which include :



Architects & Engineers



Developers



Contractors



Channel Partners



Retailers



Residential



Commercial



Institutions



Industries



Repairs

# ASCOBOND 450

SBR Latex based Multipurpose Bonding Agent & Waterproofing cum Repair Additive

- ◆ **ASCOBOND 450** is a styrene-butadiene rubber latex-based material, designed to improve waterproofing, bonding, physical properties & integrity of cementitious mortars, screeds & concretes.
- ◆ **ASCOBOND 450** also acts as a bonding agent/sealer to concrete, plaster or other porous substrates & is also suitable for tropical & hot climates.

## RECOMMENDED APPLICATIONS

- ◆ **Bonding Slurry** : Old to new concrete, plaster & gypsum etc.
- ◆ **Structural Repairs** : Reconstruction work, concrete repairs, re-plaster, masonry, parking, bridge deck etc.
- ◆ **Anti-corrosion** : Protection of reinforcements in concrete repairs
- ◆ Others such as waterproofing & as a tile fixing mortar's additive

## KEY FEATURES & BENEFITS



Highly versatile



Enhances the flexural & tensile strength of the mortar



Waterproof cementitious systems



Reduces shrinkage cracking



Improves durability of mortar

## TECHNICAL SPECIFICATIONS<sup>1</sup>

(ISO 527, ASTM C 882, BS 6319, Part 7 -1985, ASTM C 348, ASTM C 881)

<b>Appearance</b>	: Milky White, Modified Viscous Liquid
<b>Specific Gravity</b>	: 1.01 ± 0.02 Kg/ℓ
<b>Solid Content</b>	: ≥ 44%
<b>pH</b>	: 7.5 - 9
<b>Shear Bond Strength</b>	: Concrete Failure
<b>Open Time</b>	: 5 - 10 Minutes
<b>Tensile Adhesion with Concrete</b>	: ≥ 1.5 N/mm <sup>2</sup> , Concrete Failure
<b>Pull Out Bond Strength on Concrete</b>	: ≥ 4.5 N/mm <sup>2</sup> @ 28 Days
<b>Mortar Compressive Strength</b>	: ≥ 40 N/mm <sup>2</sup> @ 28 Days
<b>Mortar Tensile Strength</b>	: ≥ 5 N/mm <sup>2</sup> @ 28 Days
<b>Mortar Flexural Strength</b>	: ≥ 10 N/mm <sup>2</sup> @ 28 Days
<b>Mixing Ratio</b>	Bond Coat - OPC : Ascobond 450 : Water (1 : 1 : 1). Repair Mortar - OPC : Sand : Ascobond 450 : Water (5 : 12.5 : 1 : 1).

## COVERAGE

- ◆ A mix of cement : water : Ascobond 450 (1 : 1 : 1) - will give 50 - 70 ft<sup>2</sup> / ℓ/ coat
- ◆ Subject to mix for other applications.

## SHELF LIFE

12 months from the date of manufacturing.

<sup>1</sup>The values obtained are from laboratory testing conditions at 27 ± 2°C. On site tests may show slight variation due to site conditions and/or methods of testing/application. Follow company TDS to obtain best results.



**Packaging** : Available in 1, 5, 20, 50, 100 & 200 ℓ

# ASCOBOND EP

Specially Formulated 2-Part High Strength Epoxy Bonding Agent

- ◆ **ASCOBOND EP** is a high-strength, solvent-free epoxy bonding agent specially formulated to be used for bonding new concrete to old concrete or mixing with dry sand to make a repair mortar.
- ◆ With 100 % solids, it is a modified epoxy resin adhesive.

## RECOMMENDED APPLICATIONS

- ◆ Bonding materials such as concrete, masonry, stone, wood, metal, etc.
- ◆ Bonding plastic concrete to existing concrete or steel
- ◆ Binder for epoxy repair mortar to patch or overlay horizontal surfaces
- ◆ Gravity feed of cracks in horizontal concrete & wood surfaces
- ◆ Anchoring dowel bars, tie bars, bolts etc. in horizontal surfaces

## KEY FEATURES & BENEFITS



Ultimate bond strength



Exhibits high mechanical strength



Bonds a wide variety of materials



High durability



Can be applied on damp surfaces

## TECHNICAL SPECIFICATIONS<sup>1</sup> (ASTM C 579, IS 9162, ASTM C 882, ASTM C 882, ASTM C 881)

<b>Form</b>	: Smooth Paste Epoxy Resin : Hardener (1 : 1)
<b>Colour</b>	: White
<b>Specific Gravity</b>	: 1.75 ± 0.05 Kg / ℓ
<b>Open Time</b>	: 65 ± 10 Minutes
<b>Full Cure</b>	: 7 Days
<b>Compressive Strength</b>	: 60 ± 5 N/mm <sup>2</sup> @ 7 Days
<b>Tensile Adhesion with Concrete</b>	: ≥ 3.5 N/mm <sup>2</sup> @ 7 Days
<b>Pull Out Bond Strength on Concrete</b>	: ≥ 5.00 N/mm <sup>2</sup> @ 7 Days
<b>Shear Bond Strength</b>	: Concrete Failure

## COVERAGE

Approx. 25 - 35 ft<sup>2</sup> / Kg / Coat.

## SHELF LIFE

12 months from the date of manufacturing.



Packaging : Available in  
1 Kg, 6 Kg, & 20 Kg

<sup>1</sup>The values obtained are from laboratory testing conditions at 27 ± 2°C. On site tests may show slight variation due to site conditions and/or methods of testing/application. Follow company TDS to obtain best results.

# ASCOPRIME RUSTCON

Rust converting primer, Rust remover  
cum Rust Passivator

- ◆ **ASCOPRIME RUSTCON** is a liquid coating that reacts & converts rust to a stable black protective coating that serves as an excellent primer & rust neutralizer. It prevents further rusting by a passivating coat.
- ◆ **ASCOPRIME RUSTCON** is recommended for use on rusted or partially rusted steel bars or surfaces as a rust converter. The cured coating is impermeable, tough & durable, preventing further corrosion.

## RECOMMENDED APPLICATIONS

- ◆ Protection of reinforcement including saline Atmosphere Exposure
- ◆ Used on steel bars prior to encasing in concrete / micro concrete
- ◆ Corrosion protection of all ferrous materials
- ◆ On rusted or partially rusted steel surfaces as a converter / primer
- ◆ Off shore & on shore marine equipments

## KEY FEATURES & BENEFITS



Preserves & protects steel objects



No chlorinated solvents



Water based



Fast acting



No need for sand blasting

## TECHNICAL SPECIFICATIONS<sup>1</sup>

<b>Form</b>	: Liquid
<b>Specific Gravity</b>	: 1.02 ± 0.02 Kg / ℓ @ 25°C
<b>Water Solubility</b>	: Completely Soluble
<b>pH Level</b>	: Approx. 3
<b>Flammability</b>	: Non-Flammable
<b>Touch Dry Time</b>	: 20 ± 5 Minutes

## COVERAGE

Approx. 25 - 30 ft<sup>2</sup> / ℓ / Coat.

30 mm TMT bar (IS 456 : 2000) 100 RFT / coat

## SHELF LIFE

12 months from the date of manufacturing.

<sup>1</sup>The values obtained are from laboratory testing conditions at 27 ± 2°C. On site tests may show slight variation due to site conditions and/or methods of testing/application. Follow company TDS to obtain best results.



Packaging : Available in  
1 & 5 ℓ

# ASCOPRIME ZINGUARD

Epoxy Resin Based Zinc Primer For Corrosion Protection

- ◆ **ASCOPRIME ZINGUARD** is an epoxy resin based two components electrochemical zinc primer system having excellent adhesion on steel and corrosion protection for exterior use on new or previously painted steel surfaces.
- ◆ It protects the steel surfaces from rust and corrosion and it also improves the life of all sorts of steel substrates.
- ◆ **ASCOPRIME ZINGUARD** is ideal corrosion resistant primer for exposed steel reinforcement and steel structures at any construction site.

## RECOMMENDED APPLICATIONS<sup>1</sup>

- ◆ Use as a durable primer coating for all types of steel
- ◆ Steel pipes, railings and gates
- ◆ All sorts of exposed structure including steel girder
- ◆ Fertilizer steel tank
- ◆ Machines
- ◆ Mild steel factory sheds and corrugated MS sheets

## KEY FEATURES & BENEFITS



Excellent corrosion protection



Economical and easy to apply



Strong adhesion on metal specially MS



Weather resistant and excellent bond with concrete

## TECHNICAL SPECIFICATIONS<sup>2</sup>

<b>Appearance</b>	: Free flowing grey liquid ( Resin : Grey ; Hardener Brown)
<b>Aspect After Drying</b>	: Grey semi glossy film
<b>Specific Gravity</b>	: 1.65 ± 0.50 Kg / Lt.
<b>Mixing Ratio by Wt.</b>	: 4 Parts Resin ( A) and 1 Part Hardener ( B) ; 4 :1
<b>Pot Life</b>	: 5 to 6 Hours
<b>Touch dry Time</b>	: 20 to 24 Hours
<b>Re Coating Time</b>	: 22 to 24 Hours
<b>Full Curing</b>	: 7 days
<b>Solids</b>	: 75 ± 5 %
<b>Salt Spray</b>	: 300 Hours
<b>Maximum Heat Resistance</b>	: 50 Deg. C ( Service Life)
<b>Dry Film Thickness</b>	: 60 to 70 micron ( Per Coat )

## COVERAGE

55 ± 5 Sq. Ft. / Kg.

## SHELF LIFE

12 months from the date of manufacturing.

**Packaging** : Available in  
1 Kg and 5 Kg

# ASCOPLUG

An Ultra Rapid Setting Hydraulic Cement Water Plugging Compound

- ◆ **ASCOPLUG** is an ultra-rapid setting water resistant hydraulic cement repair mortar used as an instant water plug.
- ◆ **ASCOPLUG** is used for concrete repairs, active water leaks, hydrostatic pressure water leaks & underwater concrete repairs. This makes it ideal for basement, tunnel, elevator pit & sewer repairs. It is also used for grouting/anchoring & sealing bolts, conduits & pipes.

## RECOMMENDED APPLICATIONS

- ◆ Concrete floor & walls
- ◆ Applications include the stopping of running water & seepage through cracks & holes in masonry, walls, dams, wells, tanks, wall & floor junction etc.
- ◆ High build repairs for vertical, overhead & horizontal cracks & damages
- ◆ Recommended for grouting of large gaps

## KEY FEATURES & BENEFITS



High strength & controlled expansion



Non-shrinking, non-metallic & non-corrosive



Initial setting in 1 to 3 minutes



Stops running water & leakages



Can be applied underwater



Non-toxic & chloride free

## TECHNICAL SPECIFICATIONS<sup>1</sup>

<b>Form</b>	: Hydraulic Cement Powder
<b>Colour</b>	: Grey
<b>Bulk Density</b>	: 1000 ± 100 Kg / m <sup>3</sup>
<b>Water Demand</b>	: 25%
<b>Setting Time (Final)</b>	: 15 - 20 Minutes
<b>Compressive Strength</b>	: 8 ± 1 N/mm <sup>2</sup> @ 1 Days 30 ± 1 N/mm <sup>2</sup> @ 28 Days

## COVERAGE

30 Kg of Ascoplug bag using 7.5 l of water will yield approximately 17.5 l of plugging compound.

## SHELF LIFE

12 months from the date of manufacturing.



Packaging : Available in  
1 & 30 Kg

<sup>1</sup>The values obtained are from laboratory testing conditions at 27 ± 2°C. On site tests may show slight variation due to site conditions and/or methods of testing/application. Follow company TDS to obtain best results.

# ASCOFILL

Single Component Non-Shrink  
White Cementitious Crack Filler

- ◆ **ASCOFILL** is a specially modified single component, high strength, non-shrink crack filling powder for repairing of plaster & minor concrete cracks.
- ◆ **ASCOFILL** is ideal for filling cracks up to 5mm in horizontal or vertical areas of buildings & structures.
- ◆ It can be mixed with **ASCOBOND AR** to improve the adhesion & flexibility.

## RECOMMENDED APPLICATIONS

- ◆ For crack repairs of all surfaces
- ◆ Repairing brickwork, corners & surfaces
- ◆ For filling small holes, imperfections & suitability primed cracks

## KEY FEATURES & BENEFITS



Non-shrink & non sagging



Excellent adhesion with many substrates



Single component & needs to be mixed with only water



Easily applied on vertical & horizontal cracks



Highly economic

## TECHNICAL SPECIFICATIONS<sup>1</sup>

<b>Form</b>	: Free Flow Powder
<b>Colour</b>	: White
<b>Setting Time</b>	: 20 - 25 Minutes
<b>Bulk Density</b>	: 1250 ± 50 Kg/m <sup>3</sup>
<b>Paint Ability</b>	: Paintable
<b>UV Resistance</b>	: Yes
<b>Elongation</b> (When Mixed With Ascobond AR)	: ≥ 10 %

## COVERAGE

Approx. 55 - 65 gm / RFT/ Kg  
5mm x 5mm crack

## SHELF LIFE

12 months from the date of manufacturing.



Packaging : Available in  
1, 5 & 20 Kg Bag

<sup>1</sup>The values obtained are from laboratory testing conditions at 27 ± 2°C. On site tests may show slight variation due to site conditions and/or methods of testing/application. Follow company TDS to obtain best results.

# ASCOFILL ES

Multipurpose Acrylic Caulking Compound  
And Crack Filling Paste

- ◆ **ASCOFILL ES** is a single component special acrylic latex based multi purpose ready to use acrylic caulking compound which provides excellent high bonding on plastered substrates.
- ◆ It is developed for filling cracks and dent and also finishing the plastered wall or similar interior surfaces.
- ◆ **ASCOFILL ES** is paintable with both latex and oil based paints and it is having exceptional whiteness and smoothness.

## RECOMMENDED APPLICATIONS

- ◆ Bonding between plaster substrate and window frame
- ◆ Caulking compound for concrete and door frame
- ◆ Filling for holes and gap before painting
- ◆ Molding and trim
- ◆ Sealing of pipes

## KEY FEATURES & BENEFITS



Excellent bonding with various types of substrates



Water proof

Cured caulking compound is mildew resistant



Meets the performance requirements of weathering



Suitable for interior and exterior use

## TECHNICAL SPECIFICATIONS<sup>1</sup>

<b>Appearance</b>	: Lump free high viscous white paste
<b>Density at 30 degree Celsius</b>	: $1.40 \pm 0.05$ Kg/l
<b>% Solid Content</b>	: $75 \pm 5$ By weight
<b>Full Dry Time</b>	: 24 Hours
<b>Touch Dry Time</b>	: $35 \pm 5$ minutes after application
<b>Extrusion by manual sealant gun</b>	: Easy applicable
<b>Extension Recovery %</b>	: Minimum 75

## COVERAGE

25 mt. to 30 mt / Kg ( 5 mm x 5 mm )

## SHELF LIFE

12 months from the date of manufacturing.

**Packaging** : Available in  
200 gm, 500 gm, 1 Kg ,  
5 Kg, 20 Kg buckets

# ASCOPOXY PUTTY

Epoxy Based High Strength  
Concrete Repair Putty

- ◆ **ASCOPOXY PUTTY** is an epoxy-based two-component high strength, thixotropic repair mortar. It is designed for the restoration of damaged concrete & floor.
- ◆ **ASCOPOXY PUTTY** provides a thixotropic synthetic mortar with strong adhesion to concrete on vertical & horizontal substrates. It is suitable to use as patch repair system exposed to a wide range of environments. It has high ultimate compressive, flexural & tensile strength.

## RECOMMENDED APPLICATIONS

- ◆ Repair of spelled column, beam, slab, pillar, etc.
- ◆ Repair of concrete damaged by rust, corrosion or sea water
- ◆ High build repair for vertical overhead & horizontal applications
- ◆ Repair of damaged concrete floor & panels
- ◆ Ideal for prior application at surface preparation of self levelling coating

## KEY FEATURES & BENEFITS



Superior compressive, flexural & tensile strength



High abrasion resistance



Internal & external application



High chemical resistance



Chloride free & inhibits corrosion

## TECHNICAL SPECIFICATIONS<sup>1</sup>

(IS 9162, ASTM C 109, ISO 9162, ISO 527, ASTM D 638, ASTM C 882)

<b>Appearance</b>	: Resin-Hard Paste (Part A) Hardener-Soft Paste (Part B)
<b>Colour</b>	: Grey/white/yellow/F.Blue/Green (Mixed)
<b>Pot Life</b>	: ≥ 60 Minutes
<b>Open Time</b>	: ≥ 30 Minutes
<b>Solid Content</b>	: 96 ± 2 %
<b>Initial Setting Time</b>	: 24 Hours
<b>Final Setting Time</b>	: 7 Days
<b>Compressive strength</b>	: ≥ 60 N/mm <sup>2</sup> @ 7 Days
<b>Flexural Strength</b>	: ≥ 20 N/mm <sup>2</sup> @ 7 Days
<b>Tensile Strength</b>	: ≥ 10 N/mm <sup>2</sup> @ 7 Days
<b>Pull Out Bond Strength on Concrete</b>	: ≥ 2.0 N/mm <sup>2</sup> @ 7 Days
<b>Foot Traffic</b>	: 1 day

## CONSUMPTION

10 - 12 gm / ft<sup>2</sup> @ 1mm thickness

## SHELF LIFE

12 months from the date of manufacturing



Packaging : Available in

- (a) 4 Kg Resin & 2 Kg Hardener
- (b) 20 Kg Resin & 10 Kg Hardener

<sup>1</sup>The values obtained are from laboratory testing conditions at 27 ± 2°C. On site tests may show slight variation due to site conditions and/or methods of testing/application. Follow company TDS to obtain best results.

# ASCOREPAIR CRM

Economic, High Strength, Crack Resistance  
Concrete Repair Mortar

- ◆ **ASCOREPAIR CRM** is high strength, shrinkage compensated concrete repair mortar. It is a fine-grained one component mortar to smooth out concrete & reinforced concrete, to fill cracks/voids & repair damaged substrates. The range of application is from 5 to 50mm.
- ◆ **ASCOREPAIR CRM** can be mixed with **ASCOBOND 450** to improve the adhesion & flexibility.

## RECOMMENDED APPLICATIONS

- ◆ Repair of concrete damaged by reinforcement corrosion or damage
- ◆ Repair of the columns, beams, slab, etc. caused by corrosion of steel
- ◆ High build repairs for vertical, overhead & horizontal repairs
- ◆ Waterproof render to concrete, brickwork & block work
- ◆ Repairs of edges, cracks & holes, etc.
- ◆ Structure & Surface repairs

## KEY FEATURES & BENEFITS



Easy to use



High build repairs achievable in a single application



Excellent adhesion



Reinforced with glass fibers



Highly water resistant

## TECHNICAL SPECIFICATIONS<sup>1</sup>

(ASTM C 109, IS 9162, ASTM C 496, BS 4551, ASTM C 348, ASTM C 496, IS 2770)

<b>Appearance</b>	: Non-Metallic Grey Powder
<b>Water Demand</b>	: 16 ± 2 %
<b>Fresh Wet Density</b>	: 2000 ± 50 Kg/m <sup>3</sup>
<b>Workability Time</b>	: 20 ± 5 Minutes
<b>Layer Thickness Per Coat</b>	: 10 - 40mm
<b>Initial Setting Time</b>	: 4 - 5 Hours
<b>Final Setting Time</b>	: 24 Hours
<b>Full Cure Time</b>	: 28 Days
<b>Compressive Strength</b>	: 7 ± 1N/mm <sup>2</sup> @ 1 Days 30 ± 1N/mm <sup>2</sup> @ 28 Days 15 ± 1N/mm <sup>2</sup> @ 7 Days
<b>Tensile Adhesion Strength</b>	: ≥ 3.5 N/mm <sup>2</sup> @ 28 Days
<b>Pull Out Bond Strength</b>	: ≥ 2 N/mm <sup>2</sup> @ 28 Days
<b>Flexural Strength</b>	: ≥ 3 N/mm <sup>2</sup> @ 28 Days
<b>W/P Ratio</b>	: 0.16

## COVERAGE

Approx. 25 - 35 ft<sup>2</sup> / 30 Kg bag  
@ 5 - 8mm thickness

## SHELF LIFE

6 months from the date of manufacturing



Packaging : Available in  
30 Kg & 50 Kg Bag

<sup>1</sup>The values obtained are from laboratory testing conditions at 27 ± 2°C. On site tests may show slight variation due to site conditions and/or methods of testing/application. Follow company TDS to obtain best results.

# ASCOREPAIR RTM

High Build, High Strength Polymer Modified, Fiber Reinforced, Thixotropic Structural Repair Mortar

- ◆ **ASCOREPAIR RTM** is a high build, strength, fibre reinforced, thixotropic shrinkage compensated structural repair mortar.
- ◆ **ASCOREPAIR RTM** is designed for the restoration of damaged concrete where formwork can't be utilized.

## RECOMMENDED APPLICATIONS

- ◆ Repair of concrete damaged by reinforcement corrosion or damage
- ◆ Repair of columns, beams, slab, etc. caused by corrosion of steel
- ◆ High build repairs for vertical, overhead & horizontal repairs
- ◆ Repairs requiring high compressive strength
- ◆ Repairing damaged concrete panels where structural strength is required
- ◆ Structure & Cosmetic repairs

## KEY FEATURES & BENEFITS



High build repairs achievable in a single application



Shrinkage compensated allowing for long term dimensional stability



Excellent compressive strength



Exceptional bond strength to concrete substrates



Thixotropic

## TECHNICAL SPECIFICATIONS<sup>1</sup>

(ASTM C 109, IS 9162, ASTM C 496, ASTM C 496, IS 2770, BS 4551, ASTM C 348)

<b>Appearance</b>	: Non-Metallic Grey Powder
<b>Water Demand</b>	: 16 ± 2 %
<b>Fresh Wet Density</b>	: 2250 ± 50 Kg/m <sup>3</sup>
<b>Workability Time</b>	: 20 ± 5 Minutes
<b>Layer Thickness Per Coat</b>	: 5 - 40mm
<b>Initial Setting Time</b>	: 4 - 5 Hours
<b>Final Setting Time</b>	: 24 Hours
<b>Full Cure Time</b>	: 28 Days
<b>Compressive Strength</b>	: 8±1 N/mm <sup>2</sup> @1 Days
<b>Tensile Adhesion Strength</b>	: ≥ 3.5 N/mm <sup>2</sup> @ 28 Days
<b>Pull Out Bond Strength</b>	: ≥ 2.5 N/mm <sup>2</sup> @ 28 Days
<b>Flexural Strength</b>	: ≥ 3 N/mm <sup>2</sup> @ 28 Days
<b>W/P Ratio</b>	: 0.16

## COVERAGE

Approx. 25 - 35 ft<sup>2</sup> / 30 Kg bag @ 5 - 8mm thickness

## SHELF LIFE

6 months from the date of manufacturing



Packaging : Available in  
30 Kg & 50 Kg Bag

<sup>1</sup>The values obtained are from laboratory testing conditions at 27 ± 2°C. On site tests may show slight variation due to site conditions and/or methods of testing/application. Follow company TDS to obtain best results.

# ASCOREPAIR ERM

Moisture Insensitive Epoxy Based High Strength  
Repare Mortar

- ◆ **ASCOREPAIR ERM** is specially formulated to perform structural repairs to any overhead, vertical or inclined concrete surfaces.
- ◆ Consisting of 2 parts & 3 parts resin, hardener & special fillers having advanced additives to form a high strength epoxy mortar.

## RECOMMENDED APPLICATIONS

- ◆ Repair of any overhead, vertical or inclined concrete surfaces
- ◆ Repair of columns, beams, slab, etc. caused by corrosion of steel
- ◆ Anchoring & gap filling adhesive
- ◆ Adhesive for metal, wood, stone & many substrates
- ◆ Industrial floor repairs & toppings

## KEY FEATURES & BENEFITS



Ultimate compressive & flexural strength



Excellent resistance to abrasion & impact



Suitable for early submersion



Resistant to most diluted acids/alkalis & petroleum chemical products



Excellent adhesion with many substrates



High vibration resistant

## TECHNICAL SPECIFICATIONS<sup>1</sup>

(ASTM C 579, ISO 527, ASTM D 638, BS 6319, ASTM C 882, BS 4551, ASTM C 348, ASTM D 790, ASTM D 648, H6)

<b>Appearance</b>	<b>II Part</b> <b>III Part</b>	: Coarse Paste (A) & Hardener (B) Resin (A), Hardener (B) & Grey Powder (C)
<b>Fresh Wet Density</b>		: 2200 ± 50 Kg/m <sup>3</sup>
<b>Workability Time</b>		: 20 ± 5 Minutes
<b>Initial Setting Time</b>		: 6 - 8 Hours
<b>Final Setting Time</b>		: 24 Hours
<b>Full Cure Time</b>		: 7 Days
<b>Compressive Strength</b>		: ± 65 N/mm <sup>2</sup> @ 7 Days
<b>Tensile Adhesion Strength</b>		: ± 10 N/mm <sup>2</sup> @ 7 Days
<b>Pull Out Bond Strength</b>		: ± 3 N/mm <sup>2</sup> @ 7 Days
<b>Flexural Strength</b>		: ± 18 N/mm <sup>2</sup> @ 7 Days
<b>Heat Deflection Temperature</b>		: > 45 °C

## COVERAGE\*

65 - 70 gm / ft<sup>2</sup> @ 3mm thickness

\*subject to surface smoothness

## SHELF LIFE

12 months from the date of manufacturing



**Packaging** : Available in  
Bucket - 12 Kg & 24 Kg Set (II Part)  
Box - 24 Kg Set (III Part)

<sup>1</sup>The values obtained are from laboratory testing conditions at 27 ± 2°C. On site tests may show slight variation due to site conditions and/or methods of testing/application. Follow company TDS to obtain best results.

# ASCOREPAIR RAPID

Rapid Hardening, High  
Build Cementitious Mortar

- ◆ **ASCOREPAIR RAPID** is an ultimate high-performance rapid-setting repair mortar where engineers require a rapid outcome in the most difficult application environments.
- ◆ **ASCOREPAIR RAPID** incorporates high-grade cement systems & advanced polymer additives to form a cementitious mortar that is chloride & sulphate resistant.

## RECOMMENDED APPLICATIONS

- ◆ Repair of columns, beams, slab, etc. caused by corrosion of steel
- ◆ Repairs of RCC bridge & road
- ◆ Industrial floor repairs & toppings
- ◆ Repairs to airport runways
- ◆ High build repairs for vertical, overhead & horizontal repairs
- ◆ Repairs of highways, parking, ramps etc.

## KEY FEATURES & BENEFITS



Rapid cure



Suitable for early submersion



Chloride & sulphate resistant



Dual shrinkage compensated



High early strength

## TECHNICAL SPECIFICATIONS<sup>1</sup> (W/P ratio : 0.16)

<b>Appearance</b>	: Non-Metallic Grey Powder
<b>Water Demand</b>	: 16 ± 2 %
<b>Fresh Wet Density</b>	: 2250 ± 50 Kg/m <sup>3</sup>
<b>Workability Time</b>	: 10 ± 5 Minutes
<b>Layer Thickness Per Coat</b>	: 10 - 80mm
<b>Initial Setting Time</b>	: 30 - 40 Minutes
<b>Final Setting Time</b>	: 2 - 3 Hours
<b>Full Cure Time</b>	: 28 Days
<b>Compressive Strength</b> (ASTM C 109, IS 9162)	: ≥ 45 N/mm <sup>2</sup> @ 7 Days ≥ 55 N/mm <sup>2</sup> @ 28 Days
<b>Tensile Adhesion Strength</b> (ASTM C 496)	: ≥ 3.5 N/mm <sup>2</sup> @ 28 Days
<b>Pull Out Bond Strength</b> (ASTM C 496, IS 2770)	: ≥ 2.5 N/mm <sup>2</sup> @ 28 Days
<b>Flexural Strength</b> (BS 4551, ASTM C 348)	: ≥ 3 N/mm <sup>2</sup> @ 28 Days
<b>Curing</b>	: 7 Days

## COVERAGE

Approx. 25 - 35 ft<sup>2</sup> / 30 Kg bag @ 5 - 8mm thickness

## SHELF LIFE

6 months from the date of manufacturing



Packaging : Available in  
30 & 50 Kg Bag

<sup>1</sup>The values obtained are from laboratory testing conditions at 27 ± 2°C. On site tests may show slight variation due to site conditions and/or methods of testing/application. Follow company TDS to obtain best results.

# ASCOCRETE MC (20,40,60) High Strength, Deep Pour Structural Micro Concrete

- ◆ **ASCOCRETE MC 60** is a pre-mixed of advanced cement, specially graded aggregates & special polymers to give high strength, free-flowing, structural micro-concrete suitable for large volume grouting or repair applications of concrete.
- ◆ **ASCOCRETE MC 60** is non-metallic grout & with incorporated additives, which is also free from chlorides & is dual shrinkage compensated to completely fill voids from 10-120mm in a single layer, ensuring the transfer of loads whilst developing excellent compressive strength.

## RECOMMENDED APPLICATIONS

- ◆ Repair of concrete damaged by reinforcement corrosion or damage
- ◆ Repairs of columns, beams, slab, etc. caused by corrosion of steel
- ◆ High build repairs for vertical, overhead & horizontal repairs
- ◆ Recommended for grouting of large gaps

## KEY FEATURES & BENEFITS



Economical



Dual shrinkage compensated allowing for long term dimensional stability



Flowable structural repair concrete for large volume repairs



High ultimate strength



Good bonding with old concrete

## TECHNICAL SPECIFICATIONS<sup>1</sup> (ASTM C 109, IS 9162, ASTM C 496, ASTM C 496, IS 2770, BS 4551, ASTM C 348)

	20	40	60
<b>Appearance</b>	: Non-Metallic Grey Powder		Non-Metallic Grey Powder
<b>Water Demand</b>	: 15 ± 2 %		18 ± 2 %
<b>Fresh Wet Density</b>			2300 ± 50 Kg/m <sup>3</sup>
<b>Workability Time</b>			20 ± 5 Minutes
<b>Initial Setting Time</b>	: 2 Hours		2 - 3 Minutes
<b>Final Setting Time</b>	: 4 Hours		6 - 8 Hours
<b>Full Cure Time</b>			28 Days
<b>Compressive Strength</b>	: ≥ 10 N/mm <sup>2</sup> @ 7 Days ≥ 20 N/mm <sup>2</sup> @ 28 Days		≥ 45 N/mm <sup>2</sup> @ 7 Days ≥ 65 N/mm <sup>2</sup> @ 28 Days
<b>Tensile Adhesion Strength</b>	≥ 1.0 N/mm <sup>2</sup> @ 28 Days		≥ 3.5 N/mm <sup>2</sup> @ 28 Days
<b>Pull Out Bond Strength</b>			≥ 2.5 N/mm <sup>2</sup> @ 28 Days
<b>Flexural Strength</b>	: ≥ 2.0 N/mm <sup>2</sup> @ 28 Days		≥ 8 N/mm <sup>2</sup> @ 28 Days

## YIELD

15 - 17l/30Kg @ 0.18 ± 0.02% W/P Ratio

## SHELF LIFE

6 months from the date of manufacturing



Packaging : Available in  
30 & 50 Kg Bag

<sup>1</sup>The values obtained are from laboratory testing conditions at 27 ± 2°C. On site tests may show slight variation due to site conditions and/or methods of testing/application. Follow company TDS to obtain best results.

# ASCOGROUT (40, 50)

General Purpose, Early Strength  
Non-shrink Cementitious Grout

- ◆ **ASCOGROUT 40** is a pre-mixed cement based, non-ferrous, non-shrink grout, exhibiting good flow characteristics. This economical & high performance cementitious grout offers the advantage of low water requirements and medium to high compressive strengths.
- ◆ **ASCOGROUT 40** is a ready-to-use dry powdered product requiring only the addition of water to be used for a wide range of applications.

## RECOMMENDED APPLICATIONS

- ◆ Heavy equipment
- ◆ Bedding joints in precast concrete
- ◆ Filling gaps in RCC
- ◆ Pre-cast concrete
- ◆ Bearing plates
- ◆ Steel columns
- ◆ Anchoring applications

## KEY FEATURES & BENEFITS



Non-shrink



Good compressive strength



For external & internal applications



Provides placement versatility – trowel, pour, pump



Chloride free, non-corrosive & non-ferrous



No staining

## TECHNICAL SPECIFICATIONS<sup>1</sup> (ASTM C 109, IS 4031- part 6, IS 2770, ASTM D 469)

Appearance	: Non-Metallic, Free Flowing Grey Powder
Water Demand	: Flowable: $16 \pm 1\%$ Pourable: $18 \pm 1\%$
Fresh Wet Density	: $2200 \pm 100 \text{ Kg/m}^3$
Flow on Table	: $300 \pm 20 \text{ mm @ } 18\% \text{ W/P}$
Pot Life	: $50 \pm 10 \text{ Minutes}$
Workability	: $25 \pm 5 \text{ Minutes}$
Initial Setting Time	: 2 - 3 Hours
Layer Thickness (Single Pour)	: 20 - 80mm
Water Curing	: 7 Days
Compressive Strength Cured in water tank	: 1 Day : $\geq 10 \text{ N/mm}^2$ 7 Days : $\geq 30 \text{ N/mm}^2$ 28 Days : $\geq 42 \text{ N/mm}^2$
Pull Out Bond Strength to Steel	: $\geq 20 \text{ N/mm}^2 @ 28 \text{ Days}$
E-modulus	: $\geq 20 \text{ kN/mm}^2 @ 28 \text{ Days}$
W/P Ratio	: $0.18 \pm 0.01$

## YIELD

13 - 16 l / 30 Kg @ 0.16 - 0.18% W/P Ratio

## SHELF LIFE

6 months from the date of manufacturing



**Packaging** : Available in  
20 Kg & 30 Kg

<sup>1</sup>The values obtained are from laboratory testing conditions at  $27 \pm 2^\circ\text{C}$ . On site tests may show slight variation due to site conditions and/or methods of testing/application. Follow company TDS to obtain best results.

# ASCOGROUT (65, 80)

Multipurpose, Single Component High  
Early Strength Non-shrink Precision Grout

- ◆ **ASCOGROUT 65** is a specially modified multipurpose, high flow, non-shrink & cementitious precision grout specially designed to maintain its strengths at various consistencies from flowable to trowelable.
- ◆ **ASCOGROUT 65** produces high strength, plastic expansion, excellent substrate adhesion & durability. The low water demand ensures high early strength.

## RECOMMENDED APPLICATIONS

- ◆ Heavy equipment quality
- ◆ Filling gaps in RCC
- ◆ Pre-cast concrete
- ◆ Post fixing
- ◆ Bearing plates
- ◆ Steel columns
- ◆ Anchoring application
- ◆ Anchoring reinforcement

## KEY FEATURES & BENEFITS



Non-shrink, shrinkage compensated



Excellent bond strength



Free flow grout



Excellent adhesion with many substrates



Non-corrosive & Non-toxic



Impact resistant

## TECHNICAL SPECIFICATIONS<sup>1</sup>

(ASTM C 928, ASTM C 109, IS 4031- part 6, BS 1881, part 116, IS 2770, ASTM D 469 - 94)

**Appearance** : Non-Metallic, Free Flowing Grey Powder

**Water Demand** : Flowable:  $16 \pm 1\%$   
Pourable:  $18 \pm 1\%$

**Fresh Wet Density** :  $2200 \pm 100 \text{ Kg/m}^3$

**Flow on Table** :  $300 \pm 20\text{mm}$  @ 18% W/P Ratio

**Pot Life** :  $50 \pm 10$  Minutes

**Workability** :  $25 \pm 5$  Minutes

**Initial Setting Time** : 2 - 3 Hours

**Layer Thickness** (Single Pour) : 20 - 80mm

**Expansion under unrestrained conditions** :  $\leq 2\%$  Within 2 Hours

**Water Curing** : 7 Days

**Compressive Strength** : 1 Day :  $15 \pm 1 \text{ N/mm}^2$   
7 Days :  $40 \pm 1 \text{ N/mm}^2$   
28 Days :  $66 \pm 1 \text{ N/mm}^2$   
*Cured in water tank*

**Pull Out Bond Strength to Steel** :  $20 \text{ N/mm}^2$  @ 28 Days

**E-modulus** :  $20 \text{ kN/mm}^2$  @ 28 Days

**W/P Ratio** :  $0.18 \pm 0.01$

## YIELD

13 - 16  $\ell$  / 30 Kg @ 0.16 - 0.18 W/P Ratio

## SHELF LIFE

6 months from the date of manufacturing



Packaging : Available in  
30 Kg & 50 Kg Bag

<sup>1</sup>The values obtained are from laboratory testing conditions at  $27 \pm 2^\circ\text{C}$ . On site tests may show slight variation due to site conditions and/or methods of testing/application. Follow company TDS to obtain best results.

# ASCOGROUT GG (20,50,65)

Versatile & High Early Strength Non-shrink Pumpable Gun Grade Cementitious Grout

- ◆ **ASCOGROUT 50 GG** is a specially engineered, cement-based, non-ferrous, non-shrink gun grade grout. This economical & high-performance cementitious grout offers the advantage of medium to high compressive strengths.
- ◆ **ASCOGROUT 50 GG** is ideal for general purpose construction site applications where the major emphasis is on ease of application.

## RECOMMENDED APPLICATIONS

- ◆ Tie rods hole
- ◆ Filling gaps in RCC
- ◆ Pre-cast concrete
- ◆ Bearing plates
- ◆ Anchoring applications

## KEY FEATURES & BENEFITS



Non-shrink



High early strength



Chloride free



Provides placement versatility - pour, gun, pump



Non-ferrous

## TECHNICAL SPECIFICATIONS<sup>1</sup> (W/P ratio : 0.23 ± 0.02)

Appearance	: Non-Metalic, Free Flowing Grey Powder
Water Demand	: Gunnable: 23 ± 2 %
Fresh Wet Density	: 1900 ± 100 Kg/m <sup>3</sup>
Flow on Table	: 180 ± 20mm @ 0.25 W/P Ratio
Pot Life	: 80 ± 10 Minutes
Workability	: 60 ± 5 Minutes
Initial Setting Time	: 4 - 5 Hours
Expansion Under Unrestrained Conditions	: ≤ 1 % Within 2 Hours
Compressive Strength (ASTM C 109, IS 4031- part 6) Cured in water tank	: 1 Day : 10 ± 1 N/mm <sup>2</sup> 7 Days : 35 ± 2 N/mm <sup>2</sup> 28 Days : 52 ± 2 N/mm <sup>2</sup>
Pull Out Bond Strength to Steel (IS 2770)	: ≥ 20 ± 2 N/mm <sup>2</sup> @ 28 Days
E-modulus (ASTM D 469 - 94)	: ≥ 20 ± 2 kN/mm <sup>2</sup> @ 28 Days

## YIELD

13 - 16 ℓ / 30 Kg @ 0.21 - 0.25 W/P Ratio

## SHELF LIFE

6 months from the date of manufacturing



Packaging : Available in 30 Kg & 50 Kg Bag

<sup>1</sup>The values obtained are from laboratory testing conditions at 27 ± 2°C. On site tests may show slight variation due to site conditions and/or methods of testing/application. Follow company TDS to obtain best results.

# ASCOGROUT EP - LV

2 Part, Low Viscous Non-shrink  
Epoxy Injection Grout

- ◆ **ASCOGROUT EP - LV** is a two-part, very low viscous, non-shrink epoxy grout based on specially selected epoxy resin & hardeners to produce a highly fluid grout for injection into cracks in concrete.
- ◆ **ASCOGROUT EP - LV** is highly penetrative in structural injection & grouting repairs. It can be used as a primer for porous concrete or as a sealer for floor toppings.

## RECOMMENDED APPLICATIONS

- ◆ Repair of concrete damaged by reinforcement corrosion or damage
- ◆ Repairs to columns, beams, slab, etc. caused by corrosion of steel
- ◆ High build repairs for vertical, overhead & horizontal repairs
- ◆ Recommended for grouting of gaps up to 9mm

## KEY FEATURES & BENEFITS



Highly versatile & durable



Dual shrinkage compensated allowing for long term dimensional stability



Flowable structural repair grout for large volume repairs



High ultimate strength



High bonding with old concrete

## TECHNICAL SPECIFICATIONS<sup>1</sup>

(ASTM C 109, IS 4031- part 6, ASTM D 638, ASTM D 790, ASTM D 469, ASTM C 882)

<b>Appearance</b>	: Clear Resin (Part A) Pale Yellow Hardener (Part B)
<b>Mixing Ratio</b>	: 2 : 1 (A : B)
<b>Fresh Wet Density</b>	: 1070 ± 50 Kg/m <sup>3</sup>
<b>Viscosity on Brookfield</b> (ASTM D 1084)	: 250 ± 50 cps
<b>Pot Life</b>	: 40 ± 5 Minutes
<b>Workability</b>	: 30 ± 5 Minutes
<b>Initial Setting Time</b>	: 6 - 8 hours
<b>Compressive Strength</b> <i>Cured in water tank</i>	: 1 Day : 50 ± 2 N/mm <sup>2</sup> 7 Days : 70 ± 5 N/mm <sup>2</sup>
<b>Tensile Strength</b>	: 18 ± 2 N/mm <sup>2</sup>
<b>Flexural Strength</b>	: 8 ± 1 N/mm <sup>2</sup>
<b>E-modulus</b>	: 0.004 MPa
<b>Slant Shear Bond with Concrete</b>	: 35 ± 2 N/mm <sup>2</sup> @ 7 Days

## YIELD

Approx. 165 - 175 gm / RFT  
@ 1 mm x 1 mm gap

## SHELF LIFE

12 months from the date of manufacturing.

<sup>1</sup>The values obtained are from laboratory testing conditions at 27 ± 2°C. On site tests may show slight variation due to site conditions and/or methods of testing/application. Follow company TDS to obtain best results.



Packaging : Available in  
1.5 Kg

# ASCOGROUT EP

**100** General Purpose, Moisture Insensitive,  
High Strength, Flowable Epoxy Resin Grout

- ◆ **ASCOGROUT EP 100** is a 3 component, 100% solids, VOC free, epoxy resin system designed specifically for pours from 8mm to 200mm.
- ◆ **ASCOGROUT EP 100** offers high strength development, chemical resistance & excellent flow characteristics. **ASCOGROUT EP 100** shows good impact resistance.

## RECOMMENDED APPLICATIONS

- ◆ Heavy equipment
- ◆ Anchor bolts & sleeves
- ◆ Heavy compressors, generators, crushers
- ◆ Bridge bearings
- ◆ Crane rail & rail track grouting
- ◆ Machine bases
- ◆ Bearing plates
- ◆ Steel columns
- ◆ Wind turbine base plate grouting

## KEY FEATURES & BENEFITS



Excellent flexural, compressive strength



Thermal stability during application



Excellent adhesion with many substrates



High degree of chemical resistance



Free flow ensures the high level of contact with bearing area



Excellent vibration & creep resistance

## TECHNICAL SPECIFICATIONS<sup>1</sup>

<b>Appearance</b>	: Part A Resin, Part B Hardener & Part C Cement Grey filler
<b>Mixing Ratio</b>	: 2:1:8 (A : B : C)
<b>Fresh Wet Density</b>	: 1900 ± 50 Kg/m <sup>3</sup>
<b>Flow on Table</b>	: 240 ± 10mm
<b>Pot Life</b>	: 40 ± 5 Minutes
<b>Workability</b>	: 25 ± 5 Minutes
<b>Initial Setting Time</b>	: 4 - 5 Hours
<b>Layer Thickness (Single Pour)</b>	: 8 - 50mm
<b>Compressive Strength</b> (ASTM C 109, IS 4031- part 6) <i>Cured in water tank</i>	: 1 Day : ≥ 40 N/mm <sup>2</sup> 7 Days : ≥ 60 N/mm <sup>2</sup>
<b>Pull Out Bond Strength to Steel</b> (ASTM C 882)	: ≥ 20 ± 2 N/mm <sup>2</sup>
<b>E-modulus</b>	: 0.004 MPa

## YIELD

250 ± 25 gm / 10 ft<sup>2</sup> @ 8mm thickness

## SHELF LIFE

12 months from the date of manufacturing.



Packaging : Available in  
1 & 5 Kg

<sup>1</sup>The values obtained are from laboratory testing conditions at 27 ± 2°C. On site tests may show slight variation due to site conditions and/or methods of testing/application. Follow company TDS to obtain best results.

# ASCOTOP FH

**111** Non-metallic, Hard Wearing  
Dry Shake Floor Hardener

- ◆ **ASCOTOP FH 111** is a mixture of finely graded non-metallic quartz aggregates, plasticizer & cement binder.
- ◆ When applied at the proper point in the concrete setting cycle, it's worked into the concrete to become an integral part of the floor to provide a surface that is highly resistant to abrasion & impact.
- ◆ Provides a high-density surface that resists liquid penetration & is easy to clean & maintain.

## RECOMMENDED APPLICATIONS

- ◆ Strengthening of concrete floors in factories, distribution centers & warehouses
- ◆ Improving of surface sheen in polished concrete applications
- ◆ Fast track finishing of commercial floors as an alternative to coatings & sealers

## KEY FEATURES & BENEFITS



Provides hard, durable & impact resistant floor



Shrinkage compensated & non-rusting



Internal & external application



Chloride free



High abrasion resistance

## TECHNICAL SPECIFICATIONS<sup>1</sup> (ASTM C 109, IS 9162, BS 6319, IS 1237:1980, IS 13630-13, 2006)

<b>Form</b>	: Non-metallic Free Flow Granular Powder
<b>Colours</b>	: Natural Grey, Terracota, Green, Yellow etc.
<b>Initial Setting Time</b>	: 2-3 Hours
<b>Final Setting Time</b>	: 12 Hours
<b>Compressive Strength</b>	: 19±1 N/mm <sup>2</sup> @ 28 Days
<b>Abrasion Resistance</b>	: Approx. 1.6mm loss
<b>Mohs Hardener</b>	: > 7
<b>Layer Thickness</b>	: 2.5 to 3.0mm at dosage of 5.0 Kg/m <sup>2</sup>
<b>Time to Traffic</b>	: Foot : 1 - 2 Days Light Vehicular : 7 - 8 Days Heavy Vehicular : 28 Days
<b>Curing</b>	: 7 Days

## CONSUMPTION

Light Duty Traffic : 2.5 - 3.5 Kg/10 ft<sup>2</sup>

Medium Duty Traffic : 4.0 - 5.0 Kg/10 ft<sup>2</sup>

Heavy Duty Traffic : 5.0 - 6.0 Kg/10 ft<sup>2</sup>

## SHELF LIFE

12 months from the date of manufacturing.

<sup>1</sup>The values obtained are from laboratory testing conditions at 27 ± 2°C. On site tests may show slight variation due to site conditions and/or methods of testing/application. Follow company TDS to obtain best results.



Packaging : Available in  
30 Kg & 50 Kg Bag

# ASCOCRETE OVERLAY

Highly Durabale Overlay for Stamped Concrete

- ◆ **ASCOCRETE OVERLAY** is a stampable cement based overlay for beautifying interior and exterior surface.
- ◆ This is for making textures which resemble a whole array of designer tiles, cut stone, brick and cobble stone. etc. with traditional concrete stamping tools.

## RECOMMENDED APPLICATIONS

- ◆ Surface protection of new and existing old concrete floors
- ◆ Restoration, repair and resurfacing
- ◆ Architectural use for decoration

## KEY FEATURES & BENEFITS

Appearance of stamped and decorative concrete



Internal or external surafce



Makes surfaces easier to clean



Excellent making resistance



Good water penetration resistance



Superior resistance to ultraviolet light, freeze/thaw cycling and acid rain

## TECHNICAL SPECIFICATIONS<sup>1</sup>

<b>Appearance</b>	: Free flowing powder
<b>Bulk Density</b>	: 2100 ± 100 kg/m <sup>3</sup>
<b>Compressive Strength</b>	: 30 Mpa ( 28 days curing )
<b>Flexural Strength</b>	: Around 6 Mpa ( 28 days curing )
<b>Abrasion Resistance</b>	: Less than 50 %
<b>UV Resistance</b>	: Very good
<b>Acid &amp; Alkali Resistance</b>	: Excellent
<b>Moisture Retention</b>	: 0.40 kg/m <sup>2</sup>

## COVERAGE

2m<sup>2</sup>/ 20 kg @5-6 mm thicknes

## SHELF LIFE

6 months from the date of manufacturing.

**Packaging** : Available in  
20 Kg Bag.

# ASCOTOP FH

**333** Metallic Hard Wear Dry  
Shake Floor Hardener

- ◆ **ASCOTOP FH 333** is an anti-corrosive metallic granules based floor hardener formulated from graded aggregates, modified cement & special additives to provide a durable, non-oxidizing, dense & smooth surface with high abrasion & wear resistance.
- ◆ When incorporated into fresh concrete floors it will provide a durable surface, diamond-like hardness, that will stand.

## RECOMMENDED APPLICATIONS

- ◆ Strengthening of concrete floors
- ◆ Fast track finishing of commercial floors
- ◆ For improving the surface sheen in polished concrete applications

## KEY FEATURES & BENEFITS



Chloride free



Shrinkage compensated & non-rusting



Internal & external application



Improves impact resistance



High abrasion resistance & non-dusting

## TECHNICAL SPECIFICATIONS<sup>1</sup> (ASTM C 109, IS 9162, BS 6319, IS 1237:1980, IS 13630-13, 2006)

<b>Form</b>	: Non-metallic Free Flow Granular Powder
<b>Colours</b>	: Natural Grey, Terracota, Green, Yellow etc.
<b>Initial Setting Time</b>	: 2-3 Hours
<b>Final Setting Time</b>	: 12 Hours
<b>Compressive Strength</b>	: 15± N/mm <sup>2</sup> @ 1 Days
<b>Abrasion Resistance</b>	: Approx. 1.6mm loss
<b>Mohs Hardener</b>	: > 8
<b>Layer Thickness</b>	: 2.5 to 3.0mm at dosage of 5.0 Kg/m <sup>2</sup>
	: Foot : 1 - 2 Days
<b>Time to Traffic</b>	Light Vehicular : 7 - 8 Days Heavy Vehicular : 28 Days
<b>Curing</b>	: 7 Days

## CONSUMPTION

- ◆ For Light duty 2.5 - 3.5 kg/10 ft<sup>2</sup>
- ◆ For Medium duty 4.0 - 5.0 kg/10 ft<sup>2</sup>
- ◆ For Heavy duty 5.5 - 6.0 kg/10 ft<sup>2</sup>

## SHELF LIFE

12 months from date of manufacturing.



Packaging : Available in  
30 Kg & 50 Kg Bag

<sup>1</sup>The values obtained are from laboratory testing conditions at 27 ± 2°C. On site tests may show slight variation due to site conditions and/or methods of testing/application. Follow company TDS to obtain best results.

# ASCOPRIME PS

Single Part Primer for  
Polyurethane Sealant

- ◆ **ASCOPRIME PS** is an advanced polyurethane primer having excellent adhesion & sealing qualities for various porous & non-porous substrates & it improves the bonding of the polyurethane sealant as well as gun grade & pouring grade polysulfide sealant with standard substrates.
- ◆ **ASCOPRIME PS** is a solvent-based low viscosity penetrating primer suitable for use on metal, wood, steel & cement-based substrates.

## RECOMMENDED APPLICATIONS

- ◆ All sorts of porous & non-porous surfaces
- ◆ Residential, commercial & industrial sites
- ◆ Wood, concrete, masonry & painted surfaces
- ◆ Adhesion for use in immersion situations
- ◆ Vitriified tiles, marble, stone, granite, slate, etc.

## KEY FEATURES & BENEFITS



Seals porous surfaces & makes it waterproof



Excellent adhesion



Fast drying



Can be used on internal or external surfaces



Suitable for use with polysulfide & polyurethane

## TECHNICAL SPECIFICATIONS<sup>1</sup>

<b>Appearance</b>	: Light Brown Clear Liquid
<b>Specific Gravity</b>	: 1.00 ± 0.05 Kg / ℓ
<b>Drying Time</b>	: 25 ± 10 Minutes (depends on type of surface)
<b>Pull Out Adhesion Strength</b>	: 1 N/mm <sup>2</sup> with concrete surface after 7 days

## COVERAGE

80 - 100 ft<sup>2</sup> / ℓ / coat  
(subject to substrate condition )

## SHELF LIFE

12 months from the date of manufacturing.

<sup>1</sup>The values obtained are from laboratory testing conditions at 27 ± 2°C. On site tests may show slight variation due to site conditions and/or methods of testing/application. Follow company TDS to obtain best results.



Packaging : Available in 1 ℓ

# ASCOSEAL

**PS** High Performance, Two Part  
Elastomeric Polysulphide Joint Sealant

- ◆ **ASCOSEAL PS** specifically designed to be used as a watertight seal for moderate movement & control joints in horizontal & vertical areas.
- ◆ **ASCOSEAL PS** is based on a liquid polysulphide polymer, when mixed with the hardener, cures to form a tough, flexible & non-staining rubber-like seal.

## RECOMMENDED APPLICATIONS

- ◆ Sealing structural floor joints
- ◆ Expansion joints
- ◆ Underpasses & tunnels
- ◆ Bridges
- ◆ Airport runways
- ◆ Industrial warehouses
- ◆ Pre-cast structures
- ◆ Retaining wall

## KEY FEATURES & BENEFITS



Tough & resilient seal



Excellent adhesion to many substrates



Provides permanent & uniform watertight seal



Non-staining



Permanently elastic

## TECHNICAL SPECIFICATIONS<sup>1</sup>

<b>Chemical Base</b>	: Polysulphide, Grey
<b>Variants</b>	: Pour Grade (PG) & Gun Grade (GG)
<b>Density</b> (ISO 1183)	: 1.7 ± 0.2 Kg / ℓ
<b>Sag Flow</b> (ISO 7390)	: PG: 3 - 4mm (20mm Profile) GG: 0mm (20mm Profile)
<b>Final Cure @ Standard Conditions</b>	: 24 Hours
<b>Elongation</b> (ISO 37)	: 400 ± 50%
<b>Movement Capacity (MAV)</b> (IS 12118)	: ± 25 % of Average Joint Width
<b>Adhesion to concrete</b> (IS 2770)	: 2.5 ± 0.5 N/mm <sup>2</sup> @ 7 Days
<b>Shore A Hardness</b> (ASTM D 2240, ISO 868)	: PG: > 15 ± 3 @ 7 Days GG: > 20 ± 3 @ 7 Days
<b>Service Temperature</b>	: 0 °C to +90 °C

## COVERAGE

$$L = \frac{625(\text{PG})}{W \text{ in mm} \times D \text{ in mm}} \quad L = \frac{650(\text{GG})}{W \text{ in mm} \times D \text{ in mm}}$$

L = Length of joint in linear mtr.

W = Width of joint (mm)

D = Depth of joint (mm)

## SHELF LIFE

6 months from the date of manufacturing.



Packaging : Available in  
4 Kg set

<sup>1</sup>The values obtained are from laboratory testing conditions at 27 ± 2°C. On site tests may show slight variation due to site conditions and/or methods of testing/application. Follow company TDS to obtain best results.

# ASCOSEAL PU

Single Part Low Modulus  
Polyurethane Sealant

- ◆ **ASCOSEAL PU** is a single part, low modulus, self-curing & VOC compliant polyurethane sealant.
- ◆ **ASCOSEAL PU** has fast curing properties that develops into a strong, durable & weather resistant seal & exhibits excellent adhesion to a wide variety of substrates.

## RECOMMENDED APPLICATIONS

- ◆ Masonry
- ◆ Concrete
- ◆ Aluminium
- ◆ Glass
- ◆ Cement Sheet
- ◆ Steel
- ◆ Ceramic
- ◆ Timber

## KEY FEATURES & BENEFITS



Ready to use & easy to apply



Excellent resistance to ageing / weathering making it suitable for interior & exterior use



Paintable once cured (White)



Fast curing



Excellent adhesion with many structures

## TECHNICAL SPECIFICATIONS<sup>1</sup>

<b>Chemical Base</b>	: Polyurethane, White / Grey
<b>Density</b> (ISO 1183)	: 1.3 ± 0.5 Kg / l
<b>Sag Flow</b> (ISO 7390)	: 0mm (20mm Profile)
<b>Tack Free Time</b>	: 1 Hour
<b>Rate of Curing</b>	: 3mm for Initial 24 Hours
<b>Final Cure @ Standard Conditions</b>	: 7 Days
<b>Elongation</b> (ISO 37)	: 800 ± 50%
<b>Movement Capacity (MAV)</b> (IS 12118)	: ± 35 % of Average Joint Width
<b>Adhesion to concrete</b> (IS 2770)	: 2.5 ± 0.5 N/mm <sup>2</sup> @ 7 Days
<b>Shore A Hardness</b> (ASTM D 2240, ISO 868)	: 35 ± 5 @ 7 Days
<b>Service Temperature</b>	: -40 °C to +70 °C

## COVERAGE

$$L = \frac{W \text{ (mm)} \times D \text{ (mm)} \times L \text{ (mtr)}}{1000}$$

L = Length of joint in linear meter

W = Width of joint (mm)

D = Depth of joint (mm)

## SHELF LIFE

9 months from the date of manufacturing.



Packaging : Available in  
600 ml cartridge

<sup>1</sup>The values obtained are from laboratory testing conditions at 27 ± 2°C. On site tests may show slight variation due to site conditions and/or methods of testing/application. Follow company TDS to obtain best results.





**Walling Solutions**



**Waterproofing Systems**



**Screeds, Tiles/Stone Adhesives & Grouts**



**Structural Repairs, Sealants & Grouts**



**Protective Coatings**



## **Aswani Industries Pvt. Ltd.**

**Head Office:** Top Floor, Ascon City, Opp. Maheshwari Bhavan,  
City Light Road, Surat - 395007, Gujarat

**Factory:** Block No. 161, Opp. Garden Silk Mills, Kadodara Bardoli Road,  
Vill.: Tantithaiya, Tal. Palsana, Surat - 394305, Gujarat.



1800 532 7788



[www.ascolite.in](http://www.ascolite.in)



[info@ascolite.in](mailto:info@ascolite.in)



*Disclaimer: - Details mentioned in this catalogue are in brief. Refer TDS, method statement & other details by contacting company representative & by visiting the company website. AIPL will not be responsible for any damages with respect to inappropriate application &/or site conditions. Aswani Industries Pvt. Ltd. (AIPL) has a policy of ongoing design & development & thus reserves the right to modify specifications without prior notice. It is advised to cross-check with the company representative to ensure the document referred is the latest update.*

Version 3.00

