



ascolite 



SCREEDS, TILE/STONE ADHESIVES & GROUTS

PRODUCT BROCHURE

WHERE EVERY TILE & STONE
FINDS IT'S PERFECT MATCH



Content

About Us

· Introduction	02
· Profile	03

Screeds

· Ascocreed	04
· Ascocreed SL	05

Tile/Stone Adhesives

· Fixobond® Tile Lock <small>New</small>	06
· Fixobond® GenX	07
· Fixobond®	08
· Fixobond® Grip <small>New</small>	09
· Fixobond® +	10
· Fixobond® Pro <small>New</small>	11
· Fixobond® Prime	12
· Fixobond® Flex	13
· Fixobond® Flex+ <small>New</small>	14
· Fixobond® PU	15

Speciality Products

· Fixoprime BT	16
· Fixobond® AD	17

Cementitious & Epoxy Grouts

· Ascofine Grout	18
· Ascofine Grout S30	19
· Ascopoxy/Ascopoxy III	20

Tile/Stone Care Products

· Ascorepell SX	21
· Ascoclean TileX	22

Application Guidelines

· Tile Adhesive & Tile Grout Products Application Guidelines	23
--	----

OUR GROUP



Ascon Group of Developers

The Ascon Group of Developers is a prestigious business group based in Surat, Gujarat, with a rich legacy of over 40 years of excellence. Renowned for its leadership across multiple sectors, the group's diversified expertise spans across construction, manufacturing and trading, positioning it as a powerhouse in key industries. Ascon's unwavering commitment to innovation, quality, and sustainability has solidified its reputation as a driving force in both regional and national markets.



Ascon Realty

Since 1995



Ascolite

Since 2012

ABOUT ASCOLITE



We are at the forefront of revolutionizing the industry with our cutting-edge construction material solutions. For over a decade, with multi-location manufacturing facilities and sales branches across multiple states, we have been the trusted partner for builders, engineers, and architects.

From walling solutions, waterproofing systems, and tile/stone installation solutions to construction chemicals and more, our products set new benchmarks in performance and reliability. At Ascolite, we're not just building structures; we're building a legacy of excellence and sustainability in construction chemistry.

CORE IDEOLOGY



Core Purpose

To encourage and ensure a paradigm shift in delivering trendsetting experiences.



Mission Statement

To deliver contemporary construction solutions backed by expertise, based on novel market needs.



Core Values

- Quest to learn
- Integrity
- Energetic
- Eye for detail
- Making a difference

PRODUCT RANGE

We blend innovation with expertise to deliver superior solutions. Our advanced facility is designed to meet the diverse needs of our customers, ensuring precision, efficiency, and quality in every product. With a commitment to excellence and sustainability, we strive to set new standards in the industry.



WALLING
SOLUTIONS



WATERPROOFING
SYSTEMS



TILE & STONE
INSTALLATION



STRUCTURAL REPAIRS,
SEALANTS & GROUTS



PROTECTIVE
COATINGS

CUSTOMERS



Residential



Commercial



Institutions



Industrial



Govt. Undertakings



500+
Distributors



4000+
Retail Partners



3700+
Projects



300+
Developers



2000+
Influencers

ASCOLITE ADVANTAGE



**Production
Capacity**

4.25 L m³ (P. A.)
AA Fly Ash Blocks
4 L ton (P. A.)
Construction Chemicals



**State-of-the
-art R&D Lab**

40,000+
Yearly R&D hours



**Quality Certified
Products**

1500+
Product quality tests



**Innovative
Product Range**

100+
Cutting-edge products



**Technical
Assistance**

5500+
Training hours



**Logistic
Support**

20,000+
Yearly dispatches

ASCOSCREED

Specially Formulated High Strength, Shrinkage Controlled Cement Binder For All Types Of Floor Screed

ASCOSCREED is a concentrated cement binder renowned for its non-shrink, rapid setting, effortless spreading & exceptional strength properties. When combined with sand & water in the correct proportions, **ASCOSCREED** forms a mortar bed and floor underlayment leveling screed that is free from shrinkage & can be effortlessly poured or pumped. This binder serves as the foundation for high performance screed, preparing the surface for the installation of various types of tile or stone flooring.

APPLICATION COMPATIBILITY

SUITABLE SUBSTRATES: Old & New Concrete, Cement Mortar Bed, Cement Terrazzo, Existing Tiles, Wooden Floor And Ceramic Tiles.

SUITABLE APPLICATION: Swimming Pool, Bathroom Floors, Residential Floors, Commercial/ Warehouse Flooring As A Protection Layer, Industrial Flooring, Sports Court And Gymnasium Flooring.

RECOMMENDED USAGE:



Horizontal: 10 - 80 MM



Interior
& Exterior

PRODUCT KEY FEATURES



**SHOCK & IMPACT
RESISTANCE**



**WATER
LOCKING**



**SELF
CURING**



NON-SHRINK



**SUITABLE FOR
WET AREAS**

TECHNICAL INFORMATION

Appearance	: Grey Powder
Bulk Density	: 1150 ± 50 kg/m ³
Water Demand @ 27 ± 2°C (Ambient & Water Temp.)	: 13 ± 1% (by weight)
Mixing Time @ 27 ± 2°C	: 5 - 10 minutes
Pot Life @ 27 ± 2°C	: 4 hours ± 20 minutes
Working Time @ 27 ± 2°C	: 50 ± 10 minutes
Initial Setting Time @ 27 ± 2°C	: 180 ± 10 minutes
Light Foot Traffic @ 27 ± 2°C	: 24 hours
Compressive Strength @ 28 Days: Heavy Duty Screed (1 : 4)	: ≥ 28 N/mm ²
Medium Duty Screed (1 : 6)	: ≥ 20 N/mm ²
Light Duty Screed (1 : 8)	: ≥ 15 N/mm ²

COVERAGE

Ratio	Bed Thickness	Ascocreed	Sand (≤ 5mm)	Coverage
1 : 4	40 mm	25 kg	100 kg	22 - 23 ft ²
1 : 6	40 mm	25 kg	150 kg	31 - 32 ft ²
1 : 8	40 mm	25 kg	200 kg	37 - 38 ft ²

Yield = 25 to 28 Ltr. for 50 kg for all mix

SHELF LIFE

Store above floor level in a cool dry place for up to 9 months.

The values obtained are from laboratory testing conditions at 27 ± 2°C. On site tests may show slight variation due to site conditions and/or methods of testing/application. Follow company TDS to obtain best results.



20 | 25 Kg

ASCOSCREED SL

Specially Developed Single Part, Free Flow Cementitious Self Leveling Underlayment

ASCOSCREED SL is an exclusively designed single-component, free-flowing cementitious self-leveling underlayment. **ASCOSCREED SL** showcases exceptional flow characteristics, enabling both self-leveling & smoothing properties. It is well-suited for a wide range of common subfloors, including sand/cement screed & concrete. By application of **ASCOSCREED SL**, surface depressions, seams and surface defects are instantly eliminated after application.

APPLICATION COMPATIBILITY

SUITABLE SUBSTRATES: Concrete, Cement/Sand Screed, Quarry Tiles, Existing Tile/Stone Flooring (With **ASCOBOND 450**), Used For Smoothing And Leveling In Layers.

SUITABLE APPLICATION: As Underlayment For The Repairing And Patching Of Screeds, Concrete & Cementitious Surfaces, As Underlayment Leveling Floor For Carpets, Vinyl (PVC, Rubber) Flooring, Tiles, Wooden Tiles Floor, Uneven Horizontal Surface Of Concrete And Screeds, Leveling Anhydrite Substrates And Leveling Underfloor Heating Systems.

RECOMMENDED USAGE:



Horizontal: 2 - 10 MM



Interior

PRODUCT KEY FEATURES



SELF
LEVELING



CHLORIDE
FREE



SELF
CURING



HIGH CRACK
RESISTANT



EXCELLENT
ADHESION

TECHNICAL INFORMATION

Appearance	: Grey Powder
Bulk Density	: 1300 ± 50 kg/m ³
Mixed Density	: 2050 ± 50 kg/m ³
Water Demand @ 27 ± 2°C (Ambient & Water Temp.)	: 22 ± 1% (by weight)
Pot Life @ 27 ± 2°C	: 25 minutes ± 5 minutes
Working Time @ 27 ± 2°C	: 20 minutes ± 5 minutes
Initial Setting Time @ 27 ± 2°C	: 40 minutes
Light Foot Traffic @ 27 ± 2°C	: 5 ± 1 hours
Compressive Strength (@ 7 Days)	: 15 N/mm ²
Flexural Strength (@ 7 Days)	: 3 N/mm ²

COVERAGE

Approx. 50 ± 1 ft² @3 mm bed thickness for 25 kg bag

SHELF LIFE

Store above floor level in a cool dry place for up to 9 months.

The values obtained are from laboratory testing conditions at 27 ± 2°C. On site tests may show slight variation due to site conditions and/or methods of testing/application. Follow company TDS to obtain best results.



20 | 25 Kg

FIXOBOND® TILE LOCK

Highly Polymerized Admixture For Tiling On Wet Floor Screed

FIXOBOND® TILE LOCK is a special green strength buildup powder additive to be mixed with ordinary portland cement and directly used as wet on wet slurry based adhesive to fix tiles on the floor for indoor & outdoor applications.

APPLICATION COMPATIBILITY

SUITABLE SUBSTRATES: Freshly laid **ASCOSCREED RM** or **ASCOSCREED** and sand (as per site availability). Wet cement & sand machan with a ratio not exceeding 1 : 8 (Cement : Sand).

SUITABLE APPLICATION: Tiling for internal & external floors, Tiling for dry & moist areas, Residential & industrial applications

RECOMMENDED USAGE:



Horizontal: 1 - 2 MM



Interior: Horizontal
Exterior: Horizontal

PRODUCT KEY FEATURES



NON-SHRINK



SELF
CURING



EXTENDED
OPEN TIME



STRONG
BONDING



COST
EFFICIENT

TECHNICAL INFORMATION

Appearance	: White Powder
Bulk Density	: 700 to 740 kg/m ³
Dry Mix Mixing Ratio (Powder : Cement)	: 3 : 500 (by weight)
Water Demand for the powder & cement mix @ 27 ± 2°C	: 50 ± 1% (by weight)
Pot Life of mix @ 27 ± 2°C	: 25 - 30 minutes
Open Time of mix @ 27 ± 2°C	: 20 - 25 minutes
Adjustment time of mix @ 27 ± 2°C	: 20 - 25 minutes
Light Foot Traffic @ 27 ± 2°C	: 24 hours
Tensile Adhesion Strength (Dry Condition @ 28 Days)	: ≥ 0.55 N/mm ²

DOSAGE

300 grams for 50 kg of cement.

SHELF LIFE

Store above floor level in a cool dry place for up to 12 months.

The values obtained are from laboratory testing conditions at 27 ± 2°C. On site tests may show slight variation due to site conditions and/or methods of testing/application. Follow company TDS to obtain best results.



300 gm

FIXOBOND® GENX

Cementitious Based Polymer Modified Tile Adhesive For Ceramic Tiles

FIXOBOND® GENX is a cementitious polymer tile adhesive in grey colour, designed for fixing ceramic tiles and related materials securely onto interior wall (up to 4 feet) and floor surfaces with concrete or cement-plastered substrates, ensuring a lasting bond.

APPLICATION COMPATIBILITY

SUITABLE SUBSTRATES¹: Concrete, Cement Renders, Cement Screeds & **ASCORENDER**.

¹Subject To Porosity Of The Substrate, In Case Of Low Absorption, It Is Recommended To Use **ASCOPEPRIME® GT** Prior To The Tile Installation.

SUITABLE LAYING MATERIAL: Ceramic & Cement Mosaic Tiles².

²IS 15622: 2006 – Pressed Ceramic Tiles Specifications.

RECOMMENDED USAGE:



Vertical: 4 - 8 MM
Horizontal: 3 - 6 MM



Interior: Horizontal & Vertical

PRODUCT KEY FEATURES



**STRONG BONDING
CAPABILITIES**



**SLIP
RESISTANT**



**COST
EFFICIENT**



**EASY
TO APPLY**



LOW VOC

TECHNICAL INFORMATION



Appearance	: Grey Powder
Bulk Density	: 1450 to 1550 kg/m ³
Water Demand @ 27 ± 2°C (Ambient & Water Temp.)	: 21 ± 2% (by weight)
Pot Life @ 27 ± 2°C	: 50 minutes ± 10 minutes
Open Time @ 27 ± 2°C	: 10 - 15 minutes
Adjustment Time @ 27 ± 2°C	: 5 - 15 minutes
Light Foot Traffic @ 27 ± 2°C	: 24 hours
Tensile Adhesion Strength (Dry Condition @ 28 Days)	: ≥ 0.60 N/mm ²
Shear Adhesion Strength (Dry Condition @ 28 Days)	: ≥ 1.0 N/mm ²

COVERAGE

1.3 - 1.5 kg/m²/mm (by weight)

7 - 8 ft²/kg/mm (by application area)

SHELF LIFE

Store above floor level in a cool dry place for up to 12 months.

The values obtained are from laboratory testing conditions at 27 ± 2°C. On site tests may show slight variation due to site conditions and/or methods of testing/application. Follow company TDS to obtain best results.



20 Kg | 25 Kg | 50 Kg

FIXOBOND®

Polymer Modified, Medium/thin Set Adhesive For Tile On Tile Installations

FIXOBOND® is a cement-based polymer modified grey colour tile adhesive which offers dual bonding strength and superior workability. Specifically designed for application on interior wall and floor surfaces made of concrete or cement-plastered substrates, **FIXOBOND®** is ideal for securely fixing ceramic tiles, vitrified tiles and even tile-on-tile applications. To enhance adhesion and flexibility, **FIXOBOND®** can be mixed with **FIXOBOND® AD**.

APPLICATION COMPATIBILITY

SUITABLE SUBSTRATES: Concrete, Cement Renders, Cement Screeds, Ceramic Tiles¹, Vitrified Tiles¹, Natural Stones¹ & **ASCORENDER**.

¹Subject To Porosity Of The Substrate, In Case Of Low Absorption, It Is Recommended To Use **ASCOPRIME® GT** Prior To The Tile Installation.

SUITABLE LAYING MATERIAL: Ceramic, Clay, Porcelain, Cement Mosaic Tiles And Vitrified Tiles (Group B II)². For Laying Large Format Tiles On Floor, Mix **FIXOBOND®** With **FIXOBOND® AD** During Installation.

²IS 15622: 2006 – Pressed Ceramic Tiles Specifications.

RECOMMENDED USAGE:



Vertical: 4 - 8 MM
Horizontal: 3 - 6 MM



Interior: Horizontal & Vertical
Exterior: Horizontal

PRODUCT KEY FEATURES



DUAL BONDING
STRENGTH



SUPERIOR
WORKABILITY



HIGHER SLIP
RESISTANT



USER
FRIENDLY



LOW VOC

TECHNICAL INFORMATION



Appearance	: Grey Powder
Bulk Density	: 1520 to 1620 kg/m ³
Water Demand @ 27 ± 2°C (Ambient & Water Temp.)	: 22 ± 2% (by weight)
Pot Life @ 27 ± 2°C	: 1 hour 35 minutes ± 15 minutes
Open Time @ 27 ± 2°C	: 25 - 30 minutes
Adjustment Time @ 27 ± 2°C	: 10 - 20 minutes
Light Foot Traffic @ 27 ± 2°C	: 24 hours
Tensile Adhesion Strength (Dry Condition @ 28 Days)	: ≥ 0.85 N/mm ²
Shear Adhesion Strength (Dry Condition @ 28 Days)	: ≥ 1.0 N/mm ²

COVERAGE

1.3 - 1.5 Kg/m²/mm (by weight)
7 - 8 ft²/kg/mm (by application area)

SHELF LIFE

Store above floor level in a cool dry place for up to 12 months.

The values obtained are from laboratory testing conditions at 27 ± 2°C. On site tests may show slight variation due to site conditions and/or methods of testing/application. Follow company TDS to obtain best results.



20 Kg | 25 Kg | 50 Kg

FIXOBOND® GRIP

High Strength Polymer Modified Thin Set Adhesive For Small To Medium Tile Installations

FIXOBOND® GRIP (available in grey) is an ordinary Portland cement-based polymer-modified adhesive, offering hacking-free and self-curing properties with excellent bond strength. This adhesive is specifically formulated for fixing ceramic, porcelain, cement mosaic, vitrified tiles and quarry tiles for indoor walls & floors and outdoor floors.

APPLICATION COMPATIBILITY

SUITABLE SUBSTRATES: Concrete, Cement Renders, Cement Screeds, Cementitious Waterproof Coatings, Ceramic Tiles¹, Vitrified Tiles¹, Natural Stones¹ & **ASCORENDER**.

¹Subject To Porosity Of The Substrate, In Case Of Low Absorption, It Is Recommended To Use **ASCOPRIME® GT** Prior To The Tile Installation.

SUITABLE LAYING MATERIAL: Ceramic, Clay, Porcelain, Cement Mosaic Tiles, Vitrified Tiles (Group B I & B II)² And Natural Stones. For Laying Large Format Tiles On Floor, Mix **FIXOBOND® GRIP** With **FIXOBOND® AD** During Installation.

²IS 15622: 2006 – Pressed Ceramic Tiles Specifications.

RECOMMENDED USAGE:



3 - 12 MM



Interior: Horizontal & Vertical
Exterior: Horizontal

PRODUCT KEY FEATURES



SUITABLE FOR
WET AREAS



DUAL BONDING
STRENGTH



EXTENDED
OPEN TIME



SUPERIOR
WORKABILITY



HIGHER SLIP
RESISTANT

TECHNICAL INFORMATION



Appearance	: Grey Powder
Bulk Density	: 1550 to 1650 kg/m ³
Water Demand @ 27 ± 2°C (Ambient & Water Temp.)	: 22 ± 2% (by weight)
Pot Life @ 27 ± 2°C	: 1 hours 50 minutes ± 15 minutes
Open Time @ 27 ± 2°C	: 25 - 30 minutes
Adjustment Time @ 27 ± 2°C	: 20 - 30 Minutes
Light Foot Traffic @ 27 ± 2°C	: 24 hours
Tensile Adhesion Strength (Dry Condition @ 28 Days)	: ≥ 1.10 N/mm ²
Shear Adhesion Strength (Dry Condition @ 28 Days)	: ≥ 1.25 N/mm ²

COVERAGE

1.3 - 1.5 kg/m²/mm (by weight)

7 - 8 ft²/kg/mm (by application area)

SHELF LIFE

Store above floor level in a cool dry place for up to 12 months.

The values obtained are from laboratory testing conditions at 27 ± 2°C. On site tests may show slight variation due to site conditions and/or methods of testing/application. Follow company TDS to obtain best results.



20 Kg | 25 Kg | 50 Kg

FIXOBOND® +

High Strength & Durable (Grey/White) Adhesive Designed For Medium To Large Profile Tile & Stone Installations

FIXOBOND® + (available in white or grey) is a cement-based adhesive with advanced polymer modifications, offering self-curing capabilities and exceptional adhesive strength. This adhesive is specifically formulated for securely fixing tiles, natural stones, vitrified tiles, marble, granite and mosaic tiles on both interior and exterior walls and floors.

APPLICATION COMPATIBILITY

SUITABLE SUBSTRATES: Concrete, Cement Renders, Cement Screeds, Cementitious Waterproof Coatings, Ceramic Tiles¹, Vitrified Tiles¹, Natural Stones¹ & **ASCORENDER**.

¹Subject To Porosity Of The Substrate, In Case Of Low Absorption, It Is Recommended To Use **ASCOPRIME® GT** Prior To The Tile Installation.

SUITABLE LAYING MATERIAL: Ceramic, Clay, Porcelain, Cement Mosaic Tiles, Vitrified Tiles (Group B I & B II)² And Natural Stones. For Laying Large Format Tiles And Medium To Large Format Natural Stones On Floor, Mix **FIXOBOND® +** With **FIXOBOND® AD** During Installation.

²IS 15622: 2006 – Pressed Ceramic Tiles Specifications.

RECOMMENDED USAGE:



3 - 12 MM



Interior & Exterior:
Horizontal & Vertical

PRODUCT KEY FEATURES



SUITABLE FOR
WET AREAS



EXCELLENT DUAL
BOND STRENGTH



EXTENDED
OPEN TIME



SUPERIOR
WORKABILITY



HIGHER SLIP
RESISTANT

TECHNICAL INFORMATION



Appearance	: Grey Powder White Powder
Bulk Density	: 1435 to 1535 kg/m ³ 1340 to 1440 kg/m ³
Water Demand @ 27 ± 2°C (Ambient & Water Temp.)	: 23 ± 2% 28 ± 2% (by weight)
Pot Life @ 27 ± 2°C	: 2 hours 15 minutes ± 15 minutes
Open Time @ 27 ± 2°C	: 25 - 30 minutes
Adjustment Time @ 27 ± 2°C	: 20 - 30 Minutes
Light Foot Traffic @ 27 ± 2°C	: 24 hours
Tensile Adhesion Strength (Dry Condition @ 28 Days)	: ≥ 1.3 N/mm ²
Shear Adhesion Strength (Dry Condition @ 28 Days)	: ≥ 1.40 N/mm ²

COVERAGE

1.3 - 1.5 kg/m²/mm (by weight)

7 - 8 ft²/kg/mm (by application area)

SHELF LIFE

Store above floor level in a cool dry place for up to 12 months.

The values obtained are from laboratory testing conditions at 27 ± 2°C. On site tests may show slight variation due to site conditions and/or methods of testing/application. Follow company TDS to obtain best results.



20 Kg | 25 Kg | 50 Kg

FIXOBOND® PRO

Superior Strength & Durable Polymer Modified (Grey/white)
Adhesive For Vitrified Tiles & Natural Stones

FIXOBOND® PRO (available in grey/white) is a highly polymer-modified ordinary Portland cement-based high-strength adhesive suitable for internal and external applications in dry and wet areas. This special adhesive can also be used for demanding flooring applications like wet on wet as a slurry coat. It is ideal for various substrates to fix very low porosity vitrified tiles, glass mosaics, basalt tiles, marble, natural stones and granite.

APPLICATION COMPATIBILITY

SUITABLE SUBSTRATES: Concrete, cement renders, cement screeds, cementitious waterproofing coatings, ceramic tiles, vitrified tiles, natural stones¹ and **SCORENDER**.

¹Subject To Porosity Of The Substrate, In Case Of Low Absorption, It Is Recommended To Use **ASCOPRIME® GT** Prior To The Tile Installation.

SUITABLE LAYING MATERIAL: Ceramic, Clay, Porcelain, Cement Mosaic Tiles, Vitrified Tiles (Group B I & B II)², Basalt Tiles, Natural Stone & Glass Mosaic/Tiles. For Laying Large Format Tiles And Medium To Large Format Natural Stones On Floor, Mix **FIXOBOND® PRO** With **FIXOBOND® AD** During Installation.

²IS 15622: 2006 – Pressed Ceramic Tiles Specifications.

RECOMMENDED USAGE:



3 - 12 MM
(Regular application)



Interior & Exterior:
Horizontal & Vertical (Regular application)



Horizontal: 1 - 2 MM
(Slurry application)



Interior: Horizontal
Exterior: Horizontal (Slurry application)

PRODUCT KEY FEATURES



**SUITABLE
FOR WET AREAS**



**VERSATILE SUBSTRATE
COMPATIBILITY**



**HIGH LOAD
BEARING**



**EXTENDED
OPEN TIME**



**NO VERTICAL
SLIP**

TECHNICAL INFORMATION



Appearance	: Grey Powder White Powder
Bulk Density	: 1510 to 1610 kg/m ³ 1380 to 1480 kg/m ³
Water Demand @ 27 ± 2°C (Ambient & Water Temp.)	: Regular Adhesive: 20 ± 2% 26 ± 2% (by weight) : Slurry Adhesive: 31 ± 2% 35 ± 2% (by weight)
Pot Life @ 27 ± 2°C	: 2 hours 30 minutes ± 15 minutes
Open Time @ 27 ± 2°C	: 25 - 30 minutes
Adjustment Time @ 27 ± 2°C	: 20 - 30 minutes
Light Foot Traffic @ 27 ± 2°C	: 24 hours
Tensile Adhesion Strength (Dry Condition @ 28 Days)	: ≥ 1.55 N/mm ²
Shear Adhesion Strength (Dry Condition @ 28 Days)	: ≥ 1.60 N/mm ²

COVERAGE

Regular Adhesive: 1.3 - 1.5 kg/m²/mm (by weight)

7 - 8 ft²/kg/mm (by application)

Slurry Adhesive: 40 - 45 ft² @ 2 mm thickness for 20 Kg bag

SHELF LIFE

Store above floor level in a cool dry place for up to 12 months.

The values obtained are from laboratory testing conditions at 27 ± 2°C. On site tests may show slight variation due to site conditions and/or methods of testing/application. Follow company TDS to obtain best results.



20 Kg | 25 Kg | 50 Kg

FIXOBOND® PRIME

Advanced Impact & Shock Resistant (Grey/White) Deformable Adhesive
For Vitrified Tiles, Glass Mosaic & Natural Stones Installations

FIXOBOND® PRIME is a high-strength cement-based polymer-enriched adhesive that has advanced impact and shock resistance characteristics, making it suitable for the installation of tiles and natural stones on interior and exterior walls, as well as floors. It is ideal for fixing vitrified tiles, glass mosaic, marble and granite of medium to large profile.

APPLICATION COMPATIBILITY

SUITABLE SUBSTRATES¹: All Cementitious Substrates, Cementitious Waterproof Coatings, Ceramic Tiles, Vitrified Tiles, Natural Stones, Pre-cast Concrete² & **ASCORENDER**.

¹In Case Of Cementitious Dry Panels, Apply **ASCOPRIME® GT** Prior To The Installation Of **FIXOBOND® PRIME**.

²Do not use large format tiles for areas subject to high load.

SUITABLE LAYING MATERIAL: Ceramic, Clay, Porcelain, Cement Mosaic Tiles, Vitrified Tiles (Group B I & B II)³, Basalt Tiles, Natural Stones & Glass Mosaic/Tiles. For Laying Large Format Tiles And Natural Stones, Mix **FIXOBOND® PRIME** With **FIXOBOND® AD** During Installation.

³IS 15622: 2006 – Pressed Ceramic Tiles Specifications.

RECOMMENDED USAGE:



3 - 15 MM



Interior & Exterior:
Horizontal & Vertical

PRODUCT KEY FEATURES



**SHOCK AND IMPACT
RESISTANT**



**INDUSTRIAL
GRADE**



**SHRINKAGE &
CRACK RESISTANT**



**EXTENDED
OPEN TIME**



**SUPERIOR
WORKABILITY**

TECHNICAL INFORMATION



Appearance	: Grey Powder White Powder
Bulk Density	: 1380 to 1480 kg/m ³ 1310 to 1410 kg/m ³
Water Demand @ 27 ± 2°C (Ambient & Water Temp.)	: 28 ± 2% 30 ± 2% (by weight)
Pot Life @ 27 ± 2°C	: 2 hours 45 minutes ± 15 minutes
Open Time @ 27 ± 2°C	: 25 - 30 minutes
Adjustment Time @ 27 ± 2°C	: 20 - 30 minutes
Light Foot Traffic @ 27 ± 2°C	: 24 hours
Tensile Adhesion Strength (Dry Condition @ 28 Days)	: ≥ 1.65 N/mm ²
Shear Adhesion Strength (Dry Condition @ 28 Days)	: ≥ 1.75 N/mm ²
Deformability	: ≥ 2.5 mm & < 5 mm

COVERAGE

1.3 - 1.5 kg/m²/mm (by weight)

7 - 8 ft²/kg/mm (by application area)

SHELF LIFE

Store above floor level in a cool dry place for up to 12 months.

The values obtained are from laboratory testing conditions at 27 ± 2°C. On site tests may show slight variation due to site conditions and/or methods of testing/application. Follow company TDS to obtain best results.



20 Kg | 25 Kg | 50 Kg

FIXOBOND® FLEX

Flexible & Durable (Grey/White) Adhesive Designed For Heavy & Large Tile & Stone Installations

FIXOBOND®FLEX is a high-performance, self-curing and flexible tile adhesive that comes as a single component, formulated with a unique combination of cement, well-graded minerals and modified polymers, designed for securely affixing heavy or large ceramic tiles and natural stones best suited for areas that experience vibrations or limited deflection indoors or outdoors.

APPLICATION COMPATIBILITY

SUITABLE SUBSTRATES¹: All Cementitious Substrates, Pre-cast Concrete, Cementitious Waterproof Coatings, Ceramic Tiles, Vitrified Tiles, Natural Stones, Gypsum Blocks And Dry Wall Panels Like Gypsum Boards, Calcium Silicate Boards, Plywood, Medium Density Fibre Cement Boards And **ASCORENDER**.

¹Certain Types Of Dry Wall Panels May Require Priming Using **ASCOPRIME® GT** Prior To The Installation.

SUITABLE LAYING MATERIAL: Ceramic, Clay, Porcelain, Cement Mosaic Tiles, Vitrified Tiles (Group B I & B II)², Basalt Tiles, Natural Stone, Glass Mosaic/Tiles And Thin Tiles.

²IS 15622: 2006 – Pressed Ceramic Tiles Specifications.

RECOMMENDED USAGE:



3 - 15 MM



Interior & Exterior:
Horizontal & Vertical

PRODUCT KEY FEATURES



ULTRA HIGH
ADHESION STRENGTH



FLEXIBLE



SHOCK & IMPACT
RESISTANT



HIGH
DISPERSIBILITY



NO VERTICAL
SLIP

TECHNICAL INFORMATION



Appearance	: Grey Powder White Powder
Bulk Density	: 1260 to 1360 kg/m ³ 1220 to 1320 kg/m ³
Water Demand @ 27 ± 2°C (Ambient & Water Temp.)	: 28 ± 2% 30 ± 2% (by weight)
Pot Life @ 27 ± 2°C	: 3 hours ± 15 minutes
Open Time @ 27 ± 2°C	: 30 - 35 minutes
Adjustment Time @ 27 ± 2°C	: 25 - 35 minutes
Light Foot Traffic @ 27 ± 2°C	: 24 hours
Tensile Adhesion Strength (Dry Condition @ 28 Days)	: ≥ 2.0 N/mm ²
Shear Adhesion Strength (Dry Condition @ 28 Days)	: ≥ 2.1 N/mm ²
Deformability	: ≥ 2.5 mm & < 5 mm

COVERAGE

1.3 - 1.5 kg/m²/mm (by weight)

7 - 8 ft²/kg/mm (by application area)

SHELF LIFE

Store above floor level in a cool dry place for up to 12 months.

The values obtained are from laboratory testing conditions at 27 ± 2°C. On site tests may show slight variation due to site conditions and/or methods of testing/application. Follow company TDS to obtain best results.



20 Kg | 25 Kg | 50 Kg

FIXOBOND® FLEX+

Extremely Robust & Highly Flexible (Grey/White) Adhesive For The Installation Of Oversized Tile & Stone For Highly Demanding Installations

FIXOBOND® FLEX+ is a single-component, self-curing tile adhesive that offers high performance and exceptional flexibility. It is composed of cement, graded minerals, and a substantial amount of additives and polymers. This adhesive is ideal for applications that may experience vibration, limited deflection and highly demanding areas of installations whether indoors or outdoors.

APPLICATION COMPATIBILITY

SUITABLE SUBSTRATES¹: All Cementitious Substrates, Pre-cast Concrete, Cementitious Waterproof Coatings, Ceramic Tiles, Vitrified Tiles, Natural Stones, Gypsum Block and dry wall panels like Gypsum boards, Calcium Silicate Boards, Plywood, Medium Density Fiber Cement Boards and **ASCORENDER**.

¹Certain types of dry wall panels may require priming using **ASCOPRIME® GT** prior to the installation.

SUITABLE LAYING MATERIAL: Ceramic, Clay, Porcelain, Cement Mosaic Tiles, Vitrified Tiles (Group B I & B II)², Basalt Tiles, Natural Stone, Glass Mosaic/Tiles and Thin Tiles.

²IS 15622: 2006 – Pressed Ceramic Tiles Specifications.

RECOMMENDED USAGE:



3 - 15 MM



Interior & Exterior:
Horizontal & Vertical

PRODUCT KEY FEATURES



RESISTANT TO
HARSH CONDITIONS



HIGHLY
FLEXIBLE



PROLONGED
OPEN TIME



EXCELLENT
DISPERSIBILITY



NO VERTICAL
SLIP

TECHNICAL INFORMATION



Appearance	: Grey Powder White Powder
Bulk Density	: 1350 to 1450 kg/m ³ 1250 to 1350 kg/m ³
Water Demand @ 27 ± 2°C (Ambient & Water Temp.)	: 30 ± 2% 32 ± 2% (by weight)
Pot Life @ 27 ± 2°C	: 4 hours 15 minutes ± 15 minutes
Open Time @ 27 ± 2°C	: 40 - 45 minutes
Adjustment Time @ 27 ± 2°C	: 35 - 45 minutes
Light Foot Traffic @ 27 ± 2°C	: 24 hours
Tensile Adhesion Strength (Dry Condition @ 28 Days)	: ≥ 2.5 N/mm ²
Shear Adhesion Strength (Dry Condition @ 28 Days)	: ≥ 2.6 N/mm ²
Deformability	: ≥ 5 mm

COVERAGE

1.3 - 1.5 kg/m²/mm (by weight)

7 - 8 ft²/kg/mm (by application area)

SHELF LIFE

Store above floor level in a cool dry place for up to 12 months.

The values obtained are from laboratory testing conditions at 27 ± 2°C. On site tests may show slight variation due to site conditions and/or methods of testing/application. Follow company TDS to obtain best results.



20 Kg | 25 Kg | 50 Kg

FIXOBOND® PU

A 2-component, Polyurethane Based Multipurpose Adhesive
Designed For The Most Versatile Types Of Tiling Installations

FIXOBOND® PU is a versatile adhesive comprising two components, featuring a modified polyurethane base with remarkable flexibility and zero vertical slip. This adhesive is outstanding for multiple applications, as it delivers exceptional bonding strength across a broad spectrum of materials, including concrete, glass, plastic, wood, metal and more.

APPLICATION COMPATIBILITY

SUITABLE SUBSTRATES: All Cementitious Substrates, Pre-cast Concrete, Cementitious Waterproof Coatings, Ceramic Tiles, Vitrified Tiles, Natural Stones, Gypsum Block, Metal Surfaces, Glass Surfaces, Natural Seasoned Wood And Dry Wall Panels Like Gypsum Boards, Calcium Silicate Boards, Plywood And Medium Density Fiber Cement Board & **ASCORENDER**.

SUITABLE LAYING MATERIAL: Ceramic, Clay, Porcelain, Cement Mosaic Tiles, Vitrified Tiles (Group B I & B II)¹, Basalt Tiles, Natural Stone, Artificial/engineered Stone, Glass Mosaic/Tiles & Thin Tiles And Various Types Of Decorative Interior Panelling Material.

¹IS 15622: 2006 – Pressed Ceramic Tiles Specifications.

RECOMMENDED USAGE:



2 - 5 MM



Interior & Exterior:
Horizontal & Vertical

PRODUCT KEY FEATURES



THIXOTROPIC



ULTIMATE STRENGTH
& ADHESION



APPROPRIATE FOR
EXPOSED SURFACE



INTERIOR &
EXTERIOR USE



HIGH CRACK
RESISTANT

TECHNICAL INFORMATION



Appearance	: Part A - Viscous White Paste
	: Part B - Smooth Off White Paste
Mixed Density	: 1610 to 1710 kg/m ³
Mixing Ratio @ 27 ± 2°C (Ambient Temp.)	: 4 (Part A) : 1 (Part B) - by weight
Pot Life @ 27 ± 2°C	: 1 hours 15 minutes ± 15 minutes
Open Time @ 27 ± 2°C	: 1 hours 30 minutes ± 15 minutes
Adjustment Time @ 27 ± 2°C	: 1 hours ± 10 minutes
Light Foot Traffic @ 27 ± 2°C	: 24 hours
Tensile Adhesion Strength (Dry Condition @ 28 Days)	: ≥ 3.2 N/mm ²
Shear Adhesion Strength (Dry Condition @ 28 Days)	: ≥ 5.1 N/mm ²
Deformability	: ≥ 30 mm

COVERAGE

1.5 - 1.7 kg/m²/mm (by weight)
6 - 7 ft²/kg/mm (by application area)

SHELF LIFE

Store above floor level in a cool dry place for up to 12 months.

The values obtained are from laboratory testing conditions at 27 ± 2°C. On site tests may show slight variation due to site conditions and/or methods of testing/application. Follow company TDS to obtain best results.



4 Kg | 12 Kg

FIXOPRIME BT

Universal Back Tile Primer For Demanding Tiling Application

FIXOPRIME BT is a single-component, acrylic ester-based primer specifically formulated for superior tile adhesion. this ready-to-use solution promotes strong bonding between **FIXOBOND®** adhesives and various substrates. **FIXOPRIME BT** offers additional benefits like protection against weathering, dirt and grime infiltration. A single coat application enhances the performance of **FIXOBOND®** adhesives, highly reducing the risk of tile displacement or adhesive failure.

APPLICATION COMPATIBILITY

SUITABLE SUBSTRATES: Back side of Ceramic, Natural Stone, Vinyl And Epoxy Resin Backed Tile, Wooden Tile, Marble, Slate And All Types Of Granite, Full Body vitrified tile, Color Body Vitrified Tile, Double Charged High Vitrified Tile, Soluble Salt Vitrified Tile, Digital vitrified tile, Fiber Glass, Glazed tile, Porcelain And Stone, Terrazzo, Quarry Tile, Floating Ply, Gypsum board and plywood.

APPLICATION AREAS: Old Ceramic Floors, Tile To Tile Use, Tounge & Groove Floor Board, Asphalt Base, Dense Concrete, Plastered Walls Of Heavy Commercial areas like, Airport, Hotel Lobby, Convention Center, Shopping Mall, Departmental Store, Theatre Hall, etc.

PRODUCT KEY FEATURES



**IMPROVED
WORKABILITY**



**EXCELLENT
BONDING**



LOW ODOUR



**SOLVNET
FREE**



**EASY TO
APPLY**

TECHNICAL INFORMATION

Appearance	: White Smooth Paste
Specific Gravity	: $1.10 \pm 0.05 \text{ kg/}\ell$
Water Demand @ $27 \pm 2^\circ\text{C}$: NA
Solid Content	: $52 \pm 1\%$
Tensile Adhesion Strength	: $\geq 1.5 \text{ N/mm}^2$ (concrete, screed, gypsum & plywood)
Shear Adhesion Strength	: $\geq 1.5 \text{ N/mm}^2$ (concrete, screed, plaster, gypsum or ply)
Touch Dry Time	: 35 ± 10 minutes
DFT	: 125 ± 25 microns

Note: It is recommended to perform a test patch before application on large areas.

COVERAGE

$75 \pm 10 \text{ ft}^2/\text{kg/coat}$ (subject to porosity of the tile)

SHELF LIFE

Store above floor level in a cool dry place for up to 12 months.

The values obtained are from laboratory testing conditions at $27 \pm 2^\circ\text{C}$. On site tests may show slight variation due to site conditions and/or methods of testing/application. Follow company TDS to obtain best results.



1 Kg | 5 Kg

FIXOBOND® AD

Highly Polymer Modified Admixture For Tile Adhesives, Grouts & Dry Mix Mortar

FIXOBOND® AD is formulated utilizing a unique blend of macromolecular latex, additives, and meticulously selected components, resulting in exceptional bond strength and flexibility. This renders it exceptionally suitable for demanding installation requirements. It is advised for use in producing cement slurry, cement screed, cement plasters, and thick mortar beds, augmenting mechanical attributes and enhancing the overall physical properties of the bed.

APPLICATION COMPATIBILITY

FIXOBOND® AD Is Used As A Bonding Agent Along With **ASCOFINE GROUT**, **ASCOFINE GROUT S30**, **FIXOBOND®**, **FIXOBOND® GRIP**, **FIXOBOND® +**, **FIXOBOND® PRO**, **FIXOBOND® PRIME** And **FIXOBOND® FLEX** For Demanding Application To Increase Adhesion On Difficult Substrates.

PRODUCT KEY FEATURES



REDUCES POROSITY
OF GROUT



IMPROVES
WORKABILITY



IMPROVES
DEFORMABILITY



IMPROVES
STRENGTH



DUAL
BONDING

TECHNICAL INFORMATION

Appearance	: Free Flowing Milky White Liquid
Specific Gravity	: 1.03 ± 0.02 Kg/ℓ
Water Demand @ 27 ± 2°C	: NA
Solid Content	: 35 ± 2%
Pot Life @ 27±2°C	: ≥ 45 minutes

CONSUMPTION

FIXOBOND®, FIXOBOND® GRIP & FIXOBOND® +	FIXOBOND® PRIME & FIXOBOND® PRO	FIXOBOND® FLEX	ASCOFINE GROUT & ASCOFINE GROUT S30
Replace 10 - 15% water with FIXOBOND® AD by weight	Replace 20 - 25% water with FIXOBOND® AD by weight	Replace 45 - 50% water with FIXOBOND® AD by weight	Replace 10 - 15% water with FIXOBOND® AD by weight

**Note: Consumption Estimates Are Approximate And May Vary Depending Upon Site Conditions.*

SHELF LIFE

Store above floor level in a cool dry place for up to 12 months.

The values obtained are from laboratory testing conditions at 27 ± 2°C. On site tests may show slight variation due to site conditions and/or methods of testing/application. Follow company TDS to obtain best results.



500 ml | 1 ℓ | 5 ℓ

ASCOFINE GROUT

Un-sanded, Ultrafine & Highly Polymerised Cementitious Grout For Tile Joints Between 1- 4 mm

ASCOFINE GROUT is a cement-based grout enhanced with notable polymer modifications. By utilizing Portland cement as its primary binder & integrating specialized additives, **ASCOFINE GROUT** attains outstanding color accuracy, resistance to stains & non-shrink properties through controlled gas expansion, suitable for various tile grouting needs in both residential & commercial applications. This formulation is devoid of chloride & iron elements.

APPLICATION COMPATIBILITY

SURFACE TO BE GROUTED: Ceramic Tile, Glazed Tiles, Porcelain Tiles, Vitrified Tiles, Natural Stones, Glass Mosaic And Marble.

USAGE: Floor & Walls, Internal & External Area, Domestic Application And Commercial Application.

RECOMMENDED USAGE:



Upto
4 MM



Interior
& Exterior

PRODUCT KEY FEATURES



WATER
RESISTANT



HIGH
STRENGTH



COST
EFFECTIVE



EASY
TO USE



LOW VOC

TECHNICAL INFORMATION



Appearance	: Colored Fine Powder
Bulk Density	: 1150 ± 50 kg/m ³
Specific Gravity	: 1.80 kg/ℓ
Water Demand @ 27 ± 2°C (Ambient & Water Temp.)	: 30 ± 2% (by weight)
Pot Life @ 27 ± 2°C	: 45 minutes ± 15 minutes
Water Absorption (@24 hours)	: 0.2 mm
Light Foot Traffic @ 27 ± 2°C	: 24 hours
Compressive Strength (@28 days)	: 10 ± 1 N/mm ²
Flexural Strength (@28 days)	: 3 ± 1 N/mm ²
Pull Off Adhesion (@28 days, 3 mm thickness)	: 0.5 ± 0.1 N/mm ²

COVERAGE

$$\frac{(L+B) \times D \times W \times S.G.}{(L+W)} = \text{kg/m}^2$$

L=Length of tile(mm)

B=Breadth of tile(mm)

W=Width of joint(mm)

D=Depth of joint(mm)

S.G.=Specific Gravity

SHELF LIFE

Store above floor level in a cool dry place for up to 24 months.

The values obtained are from laboratory testing conditions at 27 ± 2°C. On site tests may show slight variation due to site conditions and/or methods of testing/application. Follow company TDS to obtain best results.



1 Kg | 5 Kg

ASCOFINE GROUT S30

Sanded And Highly Polymerised Cementitious Grout For Tile Joints
Between 5-20 mm

ASCOFINE GROUT S30, a polymer-modified sanded grout renowned for its high quality, it is a pre-mixed combination of Portland cement, graded aggregates, premium pigments, and polymer additives. This unique formulation ensures exceptional flexural & bond strengths. **ASCOFINE GROUT S30** is offered in a variety of colors to suit various applications.

APPLICATION COMPATIBILITY

SURFACE TO BE GROUTED: Ceramic Tiles, Glazed Tiles, Porcelain Tiles, Vitrified Tiles, Natural Stones, Glass Mosaic, China Mosaic, Marbles And Bricks.

USAGE: Floor & Walls, Internal & External Area, Domestic Application, Commercial Application And Wider Tile Joints.

RECOMMENDED USAGE:



5 - 20 MM



Interior
& Exterior

PRODUCT KEY FEATURES



SHRINKAGE &
CRACK RESISTANT



WEATHER
RESISTANT



HIGH STRENGTH
& DURABILITY



CHLORIDE
FREE



EASY
TO USE

TECHNICAL INFORMATION



Appearance	: Colored Sanded Powder
Bulk Density	: 1250 ± 50 kg/m ³
Specific Gravity	: 1.90 kg/ℓ
Water Demand @ 27 ± 2°C (Ambient & Water Temp.)	: 25 ± 2% (by weight)
Pot Life @ 27 ± 2°C	: 45 minutes ± 15 minutes
Water Absorption (@24 hours)	: 0.2 mm
Light Foot Traffic @ 27 ± 2°C	: 24 hours
Compressive Strength (@28 days)	: 25 ± 1 N/mm ²
Flexural Strength (@28 days)	: 3 ± 1 N/mm ²
Pull Off Adhesion (@28 days, 3 mm thickness)	: 0.5 ± 0.1 N/mm ²

COVERAGE

$$\frac{(L+B) \times D \times W \times S.G.}{(L+W)} = \text{kg/m}^2$$

L=Length of tile(mm)

B=Breadth of tile(mm)

W=Width of joint(mm)

D=Depth of joint(mm)

S.G.=Specific Gravity

SHELF LIFE

Store above floor level in a cool dry place for up to 12 months.

The values obtained are from laboratory testing conditions at 27 ± 2°C. On site tests may show slight variation due to site conditions and/or methods of testing/application. Follow company TDS to obtain best results.



25 Kg

ASCOPOXY/ASCOPOXY III

Hygienic & High Performance Epoxy Grout

ASCOPOXY/ASCOPOXY III is an advanced solvent-free epoxy resin grout & adhesive. Renowned for its superior compressive, flexural and shear adhesion strength, exceptional durability, UV resistance & chemical resistance. **ASCOPOXY/ASCOPOXY III** demonstrates outstanding performance in wet environments, making it ideal for applications in bathrooms, water tanks & water bodies, representing the epitome of innovation and excellence.

APPLICATION COMPATIBILITY

SURFACE TO BE GROUTED: Ceramic Tile, Glazed Tiles, Porcelain Tiles, Vitrified Tiles, Natural Stones, Glass Mosaic, China Mosaics, Wooden Planks/Tiles And SS/Metal Tiles.

USAGE: Floor & Walls, Internal & External Area, Domestic & Commercial Application, Wet Areas, Bathrooms, Water Tanks And Water Bodies.

RECOMMENDED USAGE:



1.5 - 15 MM



Interior
& Exterior

PRODUCT KEY FEATURES



EXCELLENT WATER
RESISTANT



EXCELLENT
STAIN RESISTANT



UV & WEATHER
RESISTANT



HYGIENIC &
DUST FREE



HIGH COMPRESSIVE
& TENSILE STRENGTH



TECHNICAL INFORMATION

	ASCOPOXY (RG2)	ASCOPOXY III (RG1)
Appearance	: A - Coloured Resin Paste	: A - Resin Liquid
	: B - Thick Liquid Hardener	: B - Thick Liquid Hardener
		: C - Coloured Filler Powder
Specific Gravity	: 1.70 kg/ℓ	: 1.70 kg/ℓ
Pot Life @ 27 ± 2°C	: 65 minutes ± 10 minutes	: 65 minutes ± 10 minutes
Water Absorption (@24 hours)	: < 0.1 g	: < 0.1 g
Light Foot Traffic @ 27 ± 2°C	: 24 hours	: 24 hours
Compressive Strength (@7 days)	: > 25 N/mm ²	: > 45 N/mm ²
Flexural Strength (@7 days)	: > 12 N/mm ²	: > 30 N/mm ²
Pull Off Adhesion	: 1.5 ± 0.1 N/mm ²	: 1.5 ± 0.1 N/mm ²

COVERAGE

$$\frac{(L+B) \times D \times W \times S.G.}{(L+W)} = \text{kg/m}^2$$

L=Length of tile(mm)

B=Breadth of tile(mm)

W=Width of joint(mm)

D=Depth of joint(mm)

S.G.=Specific Gravity

SHELF LIFE

Store above floor level in a cool dry place for up to 12 months.

The values obtained are from laboratory testing conditions at 27 ± 2°C. On site tests may show slight variation due to site conditions and/or methods of testing/application. Follow company TDS to obtain best results.



1 Kg | 5 Kg | 20 Kg

ASCOREPELL SX

Water Repellent For Bricks, Blocks, Natural Stones & Concrete

ASCOREPELL SX represents a solvent based silane siloxane water repellent cum sealer formulated for concrete, brick, block and masonry surfaces. On drying, it maintains the original appearance of surfaces and its non-film forming nature enables the substrate to breathe freely. **ASCOREPELL SX** offers versatile waterproofing application for both exterior and interior surfaces on a long-term basis.

APPLICATION COMPATIBILITY

SUITABLE SUBSTRATES:

Walls: Exposed Brick, Stucco Walls, Block And RCC Work

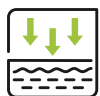
Tiles: Concrete Roof Tiles, Unglazed Wall Tiles And Mangalore Tiles

Stones: Natural And Artificial Stones/Marbles

Protective Coatings: Waterproofing & Protection Of Drywall And Cement-boards

Others: Facades, Inclined, Vertical Areas To Arrest Ingress Of Moisture

PRODUCT KEY FEATURES



**EXCELLENT
PENETRATION**



**REDUCES
EFFLORESCENCE**



**REDUCES DUST
PENETRATION**



**FAST DRYING
AND LOW ODOUR**



**EASY
TO APPLY**

TECHNICAL INFORMATION

Appearance	: Transparent Clear Liquid
Solid Content	: 13 ± 1%
Specific Gravity	: 0.80 ± 0.02 kg/ℓ
Water Demand @ 27 ± 2°C (Ambient & Water Temp.)	: NA
Surface Dry Time	: 35 minutes ± 5 minutes
Water Absorption	: < 0.1 g
Full Curing Time	: 24 hours
Recommended no. of Coats	: 1 coat

Note: It is recommended to perform a test patch before application on large areas.

COVERAGE

80 - 100 ft²/ℓ/coat (subject to porosity of the substrate)

SHELF LIFE

Store above floor level in a cool dry place for up to 24 months.

The values obtained are from laboratory testing conditions at 27 ± 2°C. On site tests may show slight variation due to site conditions and/or methods of testing/application. Follow company TDS to obtain best results.



1 ℓ | 5 ℓ

ASCOCLEAN TILEX

Universal Cleaner & Stain Remover Formulated For All Types Of Tiles

ASCOCLEAN TILEX is an excellent tile cleaner, featuring high-performance, single-component, solvent-free formulates with zero Volatile Organic Compounds (V.O.C.). This cost-effective solution is meticulously designed for the cleaning of diverse tiles. Its effectively removes permanent stains on ceramic tiles and tile joints. **ASCOCLEAN TILEX** is well-suited for cleaning tiles in both domestic and industrial use.

APPLICATION COMPATIBILITY

SUITABLE SUBSTRATES: Tiles, Glass Mosaic, Brick, Tile/Stone Joint Grout, Sanitaryware, Specific Types of Stones and is Also Effective in Eliminating Residues from the Back of the Tile.

USAGE: It Is Suitable For Both Interior & Exterior Use, Making It Ideal For Domestic, Commercial And Industrial Usage.

RECOMMENDED USAGE:

MIXING	STUBBORN SPOTS	MILD BLEMISH SPOTS	ROUTINE TILE MAINTENANCE
	Use without dilution	1 : 1 (ASCOCLEAN TILEX : Water)	2 capfuls with half bucket water

PRODUCT KEY FEATURES



PRESERVES ORIGINAL
SURFACE FINISH



EFFECTIVE
STAIN REMOVAL



COST
EFFECTIVE



ZERO VOC



EASY
TO USE

TECHNICAL INFORMATION

Appearance	: Light Green Free Flowing Liquid
Solid Content	: 7.5 ± 0.5 %
Specific Gravity	: 0.99 ± 0.01 kg/ℓ
pH	: 7.5 ± 0.5

COVERAGE

Approx. 75 - 80 ft²/ℓ (without dilution)

SHELF LIFE

Store above floor level in a cool dry place for up to 12 months.

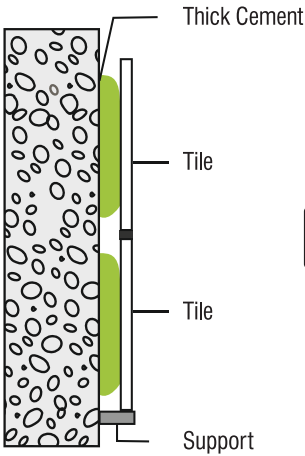
The values obtained are from laboratory testing conditions at 27 ± 2°C. On site tests may show slight variation due to site conditions and/or methods of testing/application. Follow company TDS to obtain best results.



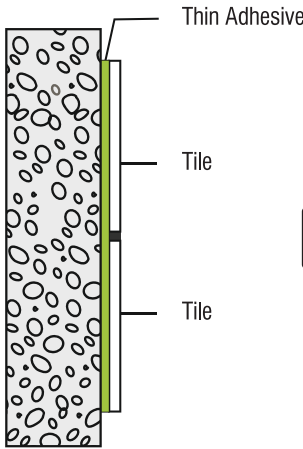
1 ℓ | 5 ℓ

APPLICATION GUIDELINES

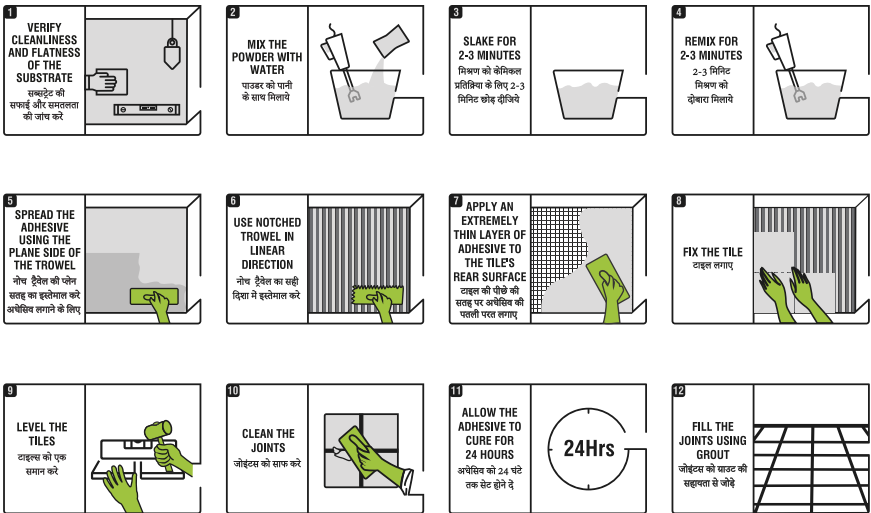
Cement / Mortar
Traditional Method



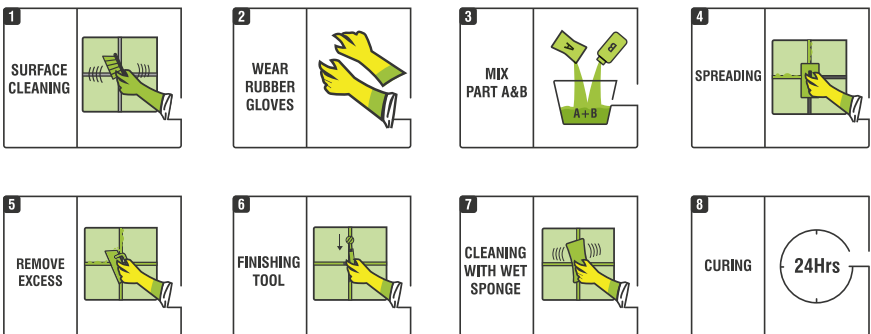
Thin Adhesive
Modern Method



FIXOBOND® PRODUCTS APPLICATION STEPS



ASCOPOXY GROUT PRODUCTS APPLICATION STEPS



1. Alternative substrates can be suitable depending on the types of adhesive.
2. Back buttering on tile with **FIXOBOND®** Adhesive range required in case tile is of Non porous Flexible body/Large format(LFT)/Extra large format(XLFT).
3. In case of Non porous/Flexible body/Large format(LFT)/Extra large format(XLFT) tiles, is highly recommended to prime the tile/stone with **FIXOPRIME BT** for desired bonding results.

NOTES

[illegible]

NOTES

This image shows a full page of a handwriting practice worksheet. It consists of numerous horizontal dashed lines spaced evenly across the page, providing a guide for letter height and placement. The lines are black and set against a plain white background. There are no margins, text, or other markings on the page.



**WALLING
SOLUTIONS**



**WATERPROOFING
SYSTEMS**



**TILE & STONE
INSTALLATION SOLUTIONS**



**STRUCTURAL REPAIRS,
SEALANTS & GROUTS**



**PROTECTIVE
COATINGS**



Aswani Industries Pvt. Ltd.

Corporate Office

Plot no 150, Pandesara GIDC, Udhana, Surat-394221, Gujarat.

☎ 1800 532 7788

✉ info@ascolite.in

🌐 www.ascolite.in

Gujarat | Maharashtra | Madhya Pradesh | Karnataka | Tamil Nadu | Kerala | Goa

DISCLAIMER: The information and recommendations in this brochure are based on our current knowledge and experience. However, they are for general guidance only and subject to change without notice. Our company continuously improves its products through research and development, so specifications may be updated at any time. For optimal performance, we recommend installation by a qualified professional. By using our product, you acknowledge acceptance of these terms.

Versions: 4.01